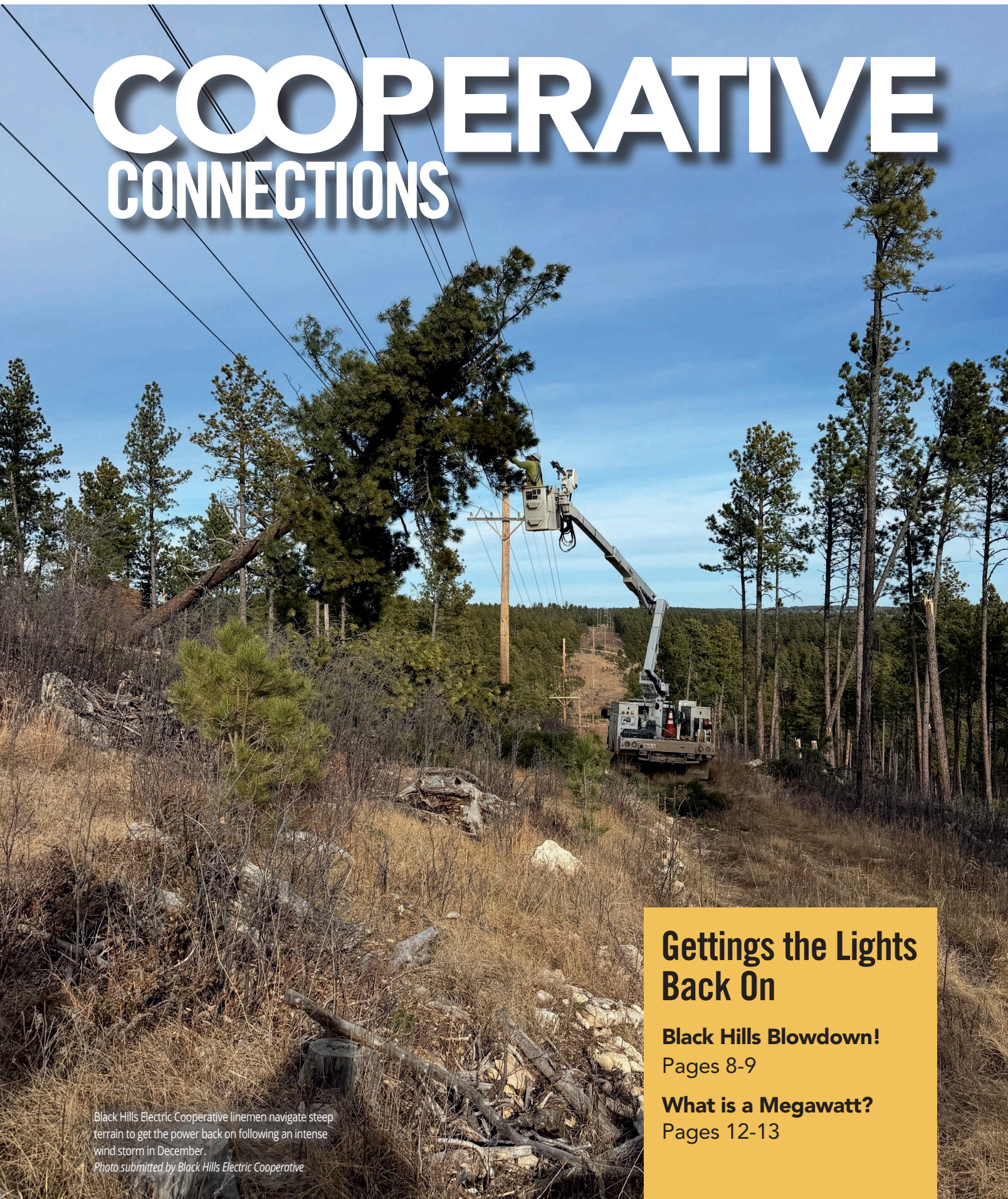


COOPERATIVE CONNECTIONS



Gettings the Lights Back On

Black Hills Blowdown!
Pages 8-9

What is a Megawatt?
Pages 12-13

Black Hills Electric Cooperative linemen navigate steep terrain to get the power back on following an intense wind storm in December.
Photo submitted by Black Hills Electric Cooperative

Director Elections & Upcoming District Meetings



Tim O'Leary
General Manager

The start of a new year brings an opportunity for members to become more involved in their cooperative. Each year, Lyon-Lincoln Electric Cooperative elects directors from its membership to serve on the board and help guide the cooperative's long-term direction. In 2026, three director seats, one in each district, will be up for election, with each term lasting three years.

Nominating Process and Director Candidates

The board has appointed a nominating committee with representatives from each district. The committee will meet in late January and again in mid-February to identify candidates for this year's election. The list of nominated candidates will be posted by March 5.

Members who are interested in becoming a director candidate or learning more about the responsibilities of serving on the board are encouraged to contact the cooperative office and read more about this opportunity in this month's newsletter. We are happy to visit with you and answer questions about director duties, time commitments, and eligibility requirements.

In addition to the nominating committee process, members may also become a candidate through the petition process. This allows a member to submit a petition signed by 10 members within the same district at their district meeting. Whether nominated by the committee or through a petition, members at the district meeting will vote to narrow the field to two candidates per district. Those candidates will then appear on the election ballot at the annual meeting on **Wednesday, June 3, 2026.**

2026 District Meeting Dates

District meetings are an important part of the cooperative's democratic process and provide an opportunity to hear directly from staff and board leadership. All district meetings will be held in person, beginning at 7:00 p.m., and include cookies and coffee. Members who attend will also receive a \$10 bill credit.

- **District 1 – Monday, April 6, 2026**
Tyler, Lyon-Lincoln Electric Headquarters
- **District 2 – Tuesday, April 7, 2026**
Russell, Russell Community Center
- **District 3 – Thursday, April 9, 2026**
Hendricks, Hendricks Golf Club

In addition to voting on director candidates, staff will provide an update on cooperative operations, recent projects, and plans for the coming year. We will also review the recently approved rate adjustment and discuss what we know about future cost pressures.

Looking Ahead

As shared in recent newsletters, we know there will be another wholesale power increase in 2027 as our power suppliers phase in their rate adjustments over two years. While wholesale power costs make up the largest portion of your electric bill, we continue to work with our power suppliers and manage local costs responsibly to limit the impact on members whenever possible.

Your participation at district meetings plays an important role in shaping these discussions and the future of your cooperative. Ron Wiering - 643900.

We Encourage You to Attend

District meetings are a valuable opportunity to stay informed, ask questions, and take part in the cooperative decision-making process. We encourage you to mark your calendar and join us for your district meeting this spring.

UPCOMING: DISTRICT MEETINGS

06 APRIL	DISTRICT 1 MEETING 7pm- Tyler, MN Lyon-Lincoln Electric Shop
07 APRIL	DISTRICT 2 MEETING 7pm- Russell, MN Russell Community Center
09 APRIL	DISTRICT 3 MEETING 7pm- Hendricks, MN Hendricks Golf Club

COOPERATIVE CONNECTIONS

LYON-LINCOLN ELECTRIC

(ISSN 1540-6989)

Board of Directors

- Dale Fier, Taunton – President
- Scott Johnson, Tyler– Vice President
- Kathleen Schreurs, Tyler – Sec./Treas.
- Joel Buyck, Garvin
- Jared Dritz, Porter
- Galen Grant, Russell
- Mary Gunnink, Lake Benton
- Mike Longtin, Taunton
- James Rokeh, Minneota

Staff and Personnel

- Tim O’Leary – General Manager
- Lyle Lamote – Line Superintendent
- Kristi Jensen - Finance Manager
- Brian Jeremiason – Manager of Marketing & External Relations
- Rochelle Borresen – Accountant
- Lisa Hauswedell – Billing Clerk
- Jessica Gums – Executive Assistant
- Wade Thooft – Operations Staff Assistant
- Alan Fischer – Work Order Clerk/Warehouse Coordinator
- Ross Birath – Journeyman Linemen
- Dan Tutt – Journeyman Linemen
- Tyler Blomme – Journeyman Linemen
- Tyler Sand – Journeyman Linemen
- Nathan Pavek – Journeyman Linemen
- Trent Skjefte – Journeyman Linemen
- Sam Rohde – Journeyman Linemen

www.llec.coop

Lyon-Lincoln Electric hours are 8:00 AM-4:30 PM Monday thru Friday

LYON-LINCOLN ELECTRIC COOPERATIVE CONNECTIONS is published monthly by Lyon-Lincoln Electric Cooperative, 205 W. Hwy. 14, PO Box 639, Tyler, MN 56178. Electric co-op members devote 50 cents from their monthly electric payments for a subscription. Non-member subscriptions are available for \$12 annually. Periodicals Postage Paid at Tyler Post Office, Tyler, MN 56178 and at additional mailing offices.

POSTMASTER: Send address changes to: Lyon-Lincoln Electric Cooperative Connections, PO Box 639, Tyler, MN 56178; Telephone (507) 247-5505; Toll Free 1-800-927-6276; Fax (507) 247-5508.

Jessica Gums, Editor



Statement Date	03/03/2026
Account Number	1234500
Payment Due	03/20/2026

Service Summary	
Previous Balance	200.00
Payment Received	Thank you 200.00 CR
Balance Forward	0.00
Current Charges Due 03/20/25	180.00
Total Amount Due	180.00

Current month's bill is subject to 3 percent late fee.
****Capital Credit Allocation for 2025****
 Patronage for 2025 is \$2,300.00
 Capital Credit Balance Status:
 2024 Balance... \$4,100.00
 2025 Retirement: \$470.00
 2025 Allocation: \$280.00
 2025 Balance...: \$4,700.00
 Above Allocations cannot be applied against any amount owed to the cooperative.

CAPITAL CREDIT ALLOCATION NOTICES

If you purchased energy from Lyon-Lincoln Electric Cooperative in 2025, you'll see a note on your February billing statement that reads: "Capital Credit Allocation for 2025."

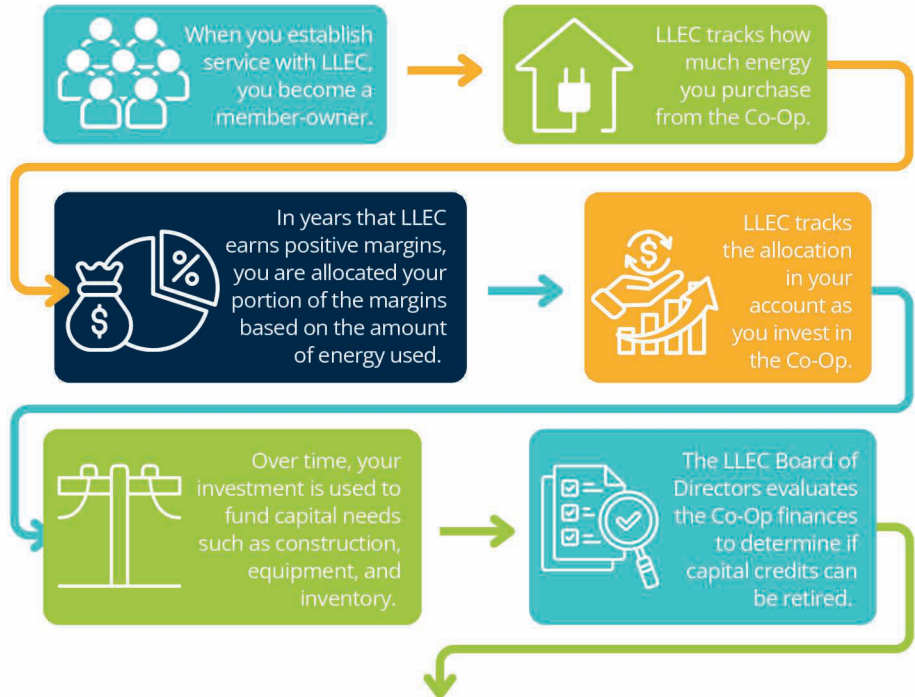
This notice reflects your share of equity in the Cooperative. If you have multiple accounts, all amounts have been combined and will appear under your main membership account.

Former members who purchased energy in 2025 and are no longer active will receive a separate capital credit allocation statement by mail.

Please keep your contact information up to date by notifying us of any address changes.

-Kristi Jensen, Finance Manager

LYON-LINCOLN ELECTRIC COOPERATIVE CAPITAL CREDIT ALLOCATION PROCESS



YOUR INVESTMENT IN LLEC IS RETURNED!

\$536,100 returned to members and estates in 2025.
 Over \$19.56 Million returned since 1948.

Ensuring Drone Safety Near Power Lines

As drones continue to gain popularity for recreational and commercial use, their integration into our daily lives should not lessen the consideration of safety – particularly when it comes to flying near power lines. The intersection of drone technology and electrical infrastructure necessitates adherence to safety protocols, regulations, and best practices to protect both pilots and the integrity of electrical systems.

Power lines are essential components of our electrical grid, delivering energy to homes and businesses. However, they can pose serious hazards for drone operators. Collisions with power lines can cause significant equipment damage, leading to costly repairs or replacements. More critically, such incidents can disrupt service for hundreds of members, creating outages that could last for hours or even days.

The Federal Aviation Administration (FAA) has established regulations governing drone use, including restrictions on flying in proximity to power lines. According to FAA guidelines, drone pilots must always maintain a visual line of sight with their aircraft and avoid flying over people. When operating near electrical infrastructure, it is crucial to adhere to the regulations pertaining to altitude and no-fly zones.

Drone operators should also be familiar with state and local laws, as some municipalities have designated specific areas as no-fly zones, particularly near critical infrastructure like power facilities. Understanding these regulations is not only a legal requirement but also an essential step in ensuring the safety of all involved.

Best Practices for Safe Operations

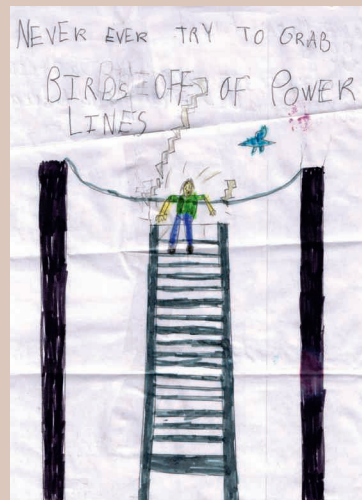
To minimize risks when flying drones near power lines, operators should adopt several best practices:

1. **Pre-Flight Planning:** Before taking off, thoroughly assess the flight area. Identify the location of power lines, potential obstacles, and any relevant no-fly zones. Consulting local maps and aerial photography can aid in understanding the landscape.
2. **Maintain Safe Distances:** When operating near power lines, always keep a safe distance. The FAA recommends a separation of at least 500 feet from energized power lines to avoid potential collisions. Keeping a safe buffer not only protects the drone but also mitigates risks to nearby electrical infrastructure.

3. **Use Technology Wisely:** Many modern drones come equipped with GPS and obstacle avoidance systems that can aid in safe navigation. Utilize these features and ensure that your drone's software is updated to reduce the likelihood of malfunction.
4. **Operating in Controlled Conditions:** Avoid flying drones in poor weather conditions such as high winds, rain, or reduced visibility. Harsh weather not only affects flight stability but can also lead to loss of control over the drone, increasing the risk of accidents.
5. **Emergency Procedures:** In case of a malfunction or loss of control, having an emergency plan in place is vital. Be prepared to communicate with local authorities if a drone becomes entangled in power lines or presents a safety concern.

As the popularity of drones continues to soar, awareness around safety protocols, especially near power lines, has become increasingly critical. By understanding the risks involved, adhering to regulations, and implementing best practices for safe drone operations, pilots can ensure the protection of themselves, others, and vital electrical infrastructure. Responsible drone use fosters innovation while ensuring safety remains paramount in our evolving technological landscape.

"Never ever try to grab birds off of power lines!"



**Naomi Krcil,
Age 8**

Naomi warns readers to never EVER grab birds off of a power line. Great picture, Naomi! Naomi's parents are Andrew and Andrea Krcil from Dante, S.D.

Kids, send your drawing with an electrical safety tip to your local electric cooperative (address found on Page 3). If your poster is published, you'll receive a prize. All entries must include your name, age, mailing address and the names of your parents. Colored drawings are encouraged.

Scrumptious SALADS

MACARONI SALAD

Ingredients:

2 cups macaroni (cooked, drained, rinsed and cooled)
2 or more cups of carrots (chopped or shredded)
1 small chopped onion (optional)
1 cup chopped green pepper (optional)

Dressing

1 cup mayonnaise (Hellmans)
1/4 cup vinegar
1/2 cup sugar
7 oz. sweetened condensed milk
1/4 tsp. salt
1/4 tsp. pepper

R. Gregg Fritz
H-D Electric

KARI REDER'S POTATO SALAD

Ingredients:

7-8 lbs. potatoes, Yukon gold or red
1 dozen eggs
1 med. sweet onion
2 cups Mayo
1 tbsp. cream
1/4 cup of apple cider vinegar
1/2 cup of sugar or splenda
1 1/2 tbsps. mustard
2 tbsps. celery seed
Celery salt, salt and pepper to taste

Method

Boil potatoes and eggs, peel and dice. Add the chopped onion. Mix together mayo, cream, apple cider vinegar, sugar, mustard, celery seed, celery salt, salt and pepper. Mix all together well and refrigerate.

Kari Reder
Northern Electric

SUMMER GARDEN PASTA SALAD

Ingredients:

1 lb. thin spaghetti, broken into 1" pieces
1 pt. cherry tomatoes, halved
2 med. zucchini, peeled & diced
2 med. cucumbers, diced
1 green pepper, diced
1 red pepper, diced
1 - 16 oz. can sliced black olives, drained

Dressing:

1 - 16 oz. bottle Italian dressing
1/4 cup parmesan cheese
1 tbsp. sesame seeds
1 tsp. paprika
1/2 tsp. celery seed
1/2 tsp. garlic salt

Method

Cook pasta; drain. Drizzle with 1-2 tsps. olive oil. In large bowl, combine pasta, tomatoes, zucchini, cucumber, peppers and olives.

Whisk dressing ingredients together. Pour over salad ingredients and toss to coat.

Cover and refrigerate for three hours.

Jane Ham
Cam Wal Electric

Please send your favorite recipes to your local electric cooperative (address found on Page 3). Each recipe printed will be entered into a drawing for a prize in December 2025. All entries must include your name, mailing address, phone number and cooperative name.

December 2025 Board Meeting Minutes

The regular monthly meeting of the Board of Directors of Lyon-Lincoln Electric Cooperative was held on Monday, December 22, 2025. The following directors were present: Scott Johnson, James Rokeh, Jared Dritz, Kathy Schreurs, Mary Gunnink, Joel Buyck, Galen Grant, Mike Longtin and Dale Fier. Also present at said Board Meeting were General Manager, Timothy O'Leary, Finance Manager, Kristi Jensen, and Attorney, Michael W. Cable.

The Board and others in attendance stood and gave the Pledge of Allegiance. President, Dale Fier, then called the meeting to order and conducted routine business including approval of the November 2025 meeting minutes, a review of the check schedule, applications for memberships, and shares to be cancelled.

Finance Manager, Kristi Jensen, reviewed the Financial and Statistical Report for the period ending October 31, 2025. The Board was presented with the Basin Capital Credit Retirement for their information, reviewed and approved the 2026 budget and approved the rate adjustments to monthly charges, energy rates, and demand charges across all rate classes.

The board viewed the November 2025 Outage and Safety Reports prepared by Lyle Lamote, Line Superintendent. The Board was informed that there was a Safety Meeting held concerning the topic of Grounding and Oil Reclosure Procedures which was presented by Brandon Cruz from Star Energy

Services. Mr. Lamote indicated that the linemen were working on the following projects: oil circuit recloser (OCR) maintenance, system-wide line patrol, pole replacements in multiple townships, and completion of new underground service for a lift pump east of Balaton.

Brian Jeremiason, Manager of Marketing and External Relations, reviewed his report with the Board and discussion was as follows: shared findings from the recent East River Member Satisfaction Survey, key takeaways included strong member satisfaction and trust, with survey results showing high scores for reliability, management, and member care. Preferred communication methods include email, the Cooperative magazine, text messages, and bill inserts. The Cooperative is also moving forward with the load control receiver (LCR) replacement project, coordinating with area electricians and preparing member communications and online tools to streamline the process.

General Manager, Timothy O'Leary, gave his General Manager's Report and was as follows: reviewed the November power bill and sales to members and compared those figures to budgeted amounts, looked at line loss for the system, and reported on the East River MAC Meeting, reviewed upcoming meetings and notices and reviewed the Lyon-Lincoln Electric Cooperative, Inc.'s Cyber Report for November, 2025 which was prepared by East River Cyber Security Department.

The Board approved a legal services agreement with Quarnstrom & Doering, P.A., and appointed delegates and alternates for upcoming NRECA, NRTC, and MREA meetings.

General Manager, Timothy O'Leary, reviewed with the Board the Strategic Plan Matrix and also advised the Board that he was going to be contacting HD Electric Cooperative at Clear Lake, South Dakota and arrange a time for Board Members to go to HD Electric Cooperative and review what they did when building its headquarters building.

The Board viewed the East River Electric Power Cooperative, Inc. Monthly Meeting Report including the Summary for Basin Electric Power Cooperative, Inc.

There being no further business to come before the Board, President, Dale Fier, adjourned the meeting at 11:50am.

OUTAGE REPORT:

10 OR MORE CONSUMERS

DECEMBER 2025

12/04/25 - 115 consumers were off 1 hour and 35 minutes in Ash Lake, Diamond Lake and Shaokatan Townships. The cause was burnt up bushing on an OCR in the Ivanhoe Substation.

2026 To-Do LIST

- PAY BILL ONLINE**
You CAN PAY YOUR BILL THROUGH AUTO-PAY, BY PHONE, OR ONLINE TO SAVE MONEY ON STAMPS & AVOID LATE FEES
- UPDATE CONTACT INFORMATION**
The co-op calls members if there is a planned outage for maintenance. You want to get those messages!
- WE CAN HELP!**
CALL 1-800-927-6276 OR VISIT LLEC.COOP FOR MORE INFO. ABOUT OUR PROGRAMS & SERVICES
- SET IT AND FORGET IT**
GO PAPERLESS, TURN ON ALERTS, AND MAKE LIFE A LITTLE EASIER.
- SIGN UP FOR SMARTHUB!**
Managing your account is as easy as 1-2-3. Download the SmartHub app on your smartphone

Updated Notice to Co-Generators

In accordance with Lyon-Lincoln Electric Cooperative's adopted rules for cogeneration and small power production, the Cooperative is required to interconnect with and purchase electricity from qualifying cogenerators and small power producers who meet the established criteria of a qualifying facility.

Lyon-Lincoln Electric Cooperative, Inc. will provide information at no cost to any interested member, upon request, regarding applicable rates and interconnection requirements. All interconnections require submission of an application and approval in order to be recognized as a qualifying facility.

Any disputes related to interconnections or the sale and purchase of electricity are subject to resolution by the Lyon-Lincoln Electric Cooperative Board of Directors. Nicholas Digre - 1490200.

Members seeking additional information should contact Lyon-Lincoln Electric Cooperative at: **PO Box 639, Tyler, MN 56178, or call 507-247-5505**

YEAR-TO-DATE COMPARISON

NOVEMBER 2025

	November - 2024	November - 2025
Total Revenue	\$10,059,219	\$11,152,543
Cost of Power	\$5,809,677	\$6,408,147
Operating Expenses	\$4,285,759	\$4,516,354
Operating Margins	\$(36,217)	\$228,042
KWH's Purchased	87,399,749	92,712,353
KWH's Sold	82,609,735	87,841,352
Members	3,955	3,954
Miles of Line	1,670	1,669
Members per Mile	2.37	2.37

WIN MONEY

FIND YOUR NAME & MEMBER #

The tradition of listing member names and numbers in the newsletter continues in the Co-op Connections. If you find your name and member number, call the office and let us know and you will receive a \$20 energy credit.

In last month's Co-op Connections, Tara Cowell and Christopher Nelson were listed, and will receive an energy credit if they spotted their names and called the office. Once again, there are two new names and numbers hidden in this issue. Good Luck!

ENERGY EFFICIENCY

TIP OF THE MONTH

As spring arrives, take advantage of milder temperatures to save energy at home. Open windows on pleasant days to bring in fresh air instead of running your HVAC system. It's also a great time to replace dirty air filters, which helps your system run more efficiently and improves indoor air quality. As daylight increases, turn off unnecessary lights and rely on natural sunlight when possible. Small seasonal adjustments like these can reduce energy use, lower monthly bills and help keep your home comfortable as winter transitions into spring.

Source: energy.gov



Intense wind left the crossarm of a broken three-phase pole hanging after a holiday storm.
Photos submitted by Black Hills Electric Cooperative

GETTING THE LIGHTS BACK ON

Black Hills Electric Cooperative Works Tirelessly Following Holiday Storm

Frank Turner

frank.turner@sdrea.coop

In the early morning hours of Dec. 18, powerful winds swept across western South Dakota, leaving much of the Black Hills without electricity. The outage included the home of Bill Brisk, manager of operations at Black Hills Electric Cooperative.

Through wild winds, Brisk set out for his office at the cooperative at 3 a.m., where he discovered that the windstorm was unlike anything he had seen in his 36 years with the cooperative.

“We get wind in the Hills,” Brisk said. “But nothing like that. In all of the time that I’ve been at the cooperative, I’ve never seen wind that strong.”

Wind gusts were later estimated at more than 100 mph, tearing through the Black

Hills with unprecedented force.

When Brisk arrived, the scope of the damage became clear. Nearly the entire system was down, and more than 11,000 of the co-op’s approximately 11,500 meters were without power. By daybreak, more than 96% of Black Hills Electric Cooperative’s system was dark, the largest outage event in the cooperative’s history.

Although an influx of outage calls from members came in around midnight, Brisk made an early and critical decision; crews would not be sent out while the storm was still raging.

“We began receiving calls around midnight, but I did not have our crews go out, just for the fact that it was just too dangerous,” Brisk said. “Trees were breaking off, conditions were hazardous, and I didn’t want to put our crews in any

dangerous situations.”

Instead, crews waited for daylight, when conditions allowed for safe assessment – the first step of getting the lights back on.

Assessment almost always begins with reporting from the community. Due to an overwhelming call volume during storm events, local reports of outages are forwarded to Basin Electric Power Cooperative’s Security and Response Services. These services relay important updates to electric cooperatives. Dispatchers communicate with linemen via push-to-talk radios and cell phones, tracking linemen from the time they leave the shop until the outage has been restored.

In addition to local reports, linemen also conduct their own assessments. That morning, linemen reported countless uprooted and snapped trees, downed poles and even wires lay broken across forest floors and roadways. In some areas, trees fell into other trees, creating dangerous conditions for anyone working below.

“I believe this was one of the worst storms in our cooperative’s history, including winter storm Atlas,” said Brisk.

As the assessment was underway, line

crews worked to bring downed substations back online first, then main three-phase feeders, followed by smaller distribution lines that bring power directly to homes and businesses. That order helps restore electricity to the greatest number of members as quickly as possible.

In the Black Hills, terrain adds another layer of complexity. Many lines run through dense forest, steep canyons and areas far from maintained roads.

“This isn’t square-mile territory,” Brisk said. “You might have to drive five or six miles just to get around a canyon.”

By midday Dec. 18, it was decided the damage was too widespread for Black Hills Electric to tackle alone. Brisk reached out to Mark Patterson, South Dakota Rural Electric Association’s manager of loss control, to request mutual aid from neighboring cooperatives – reinforcing a long-standing cooperative tradition built on neighbors helping neighbors.

Within hours, assistance began mobilizing. Crews, trucks and equipment arrived from across western South Dakota. Six electric cooperatives and a contractor ultimately sent help, bringing 55 additional linemen to the Black Hills. Those crews came from Butte Electric Cooperative, Cherry-Todd Electric Cooperative, Lacreek Electric Association, West Central Electric Cooperative, West River Electric Association, Rushmore Electric Power Cooperative and Kainz Power Lines, a local contractor based out of Custer.

“I had each operations manager of the responding cooperatives call me and ask what we needed,” Brisk said. “We asked for bucket trucks, digger trucks, chainsaws, attachments for skid steers, and extra line crews, and they sent everything we asked for.”

Days began early and ended late with crews often working 12 to 16-hour shifts. Brisk emphasized safety repeatedly to the crews as they worked among unstable trees, high winds and rugged terrain.

Behind the scenes, the restoration effort extended beyond the field. Office staff coordinated logistics and prepared meals. Lunches were packed daily for crews heading out before dawn. Supplies

were tracked, equipment was staged and communication updates were shared with members.

“It wasn’t just the line crews,” Brisk said. “Everybody stepped up.”

As crews continued working and Christmas approached, it appeared unlikely that power would be fully restored in time for the holiday. The visiting crews made it clear they were willing to stay through the holiday.

“All the outside crews said they weren’t leaving,” Brisk said. “They stayed to help us finish.”

By Christmas Eve, most members had power for the holiday and visiting crews were able to return home. Even still, Black Hills Electric crews continued limited work through the holiday, work that continues today.

“To be truthful, we are still cutting trees, setting poles and repairing lines from this storm,” said Brisk.

The storm was later designated a FEMA-eligible event, requiring detailed tracking of labor, equipment and materials.

Looking back, Brisk said the restoration efforts relied heavily on cooperation and dedication among crews from the assisting cooperatives.

“It’s good to know you’ve got great neighbors,” he said. “When you need help, they come.”



An assisting lineman from West River Electric Cooperative installs a ground on the line to be further worked on.



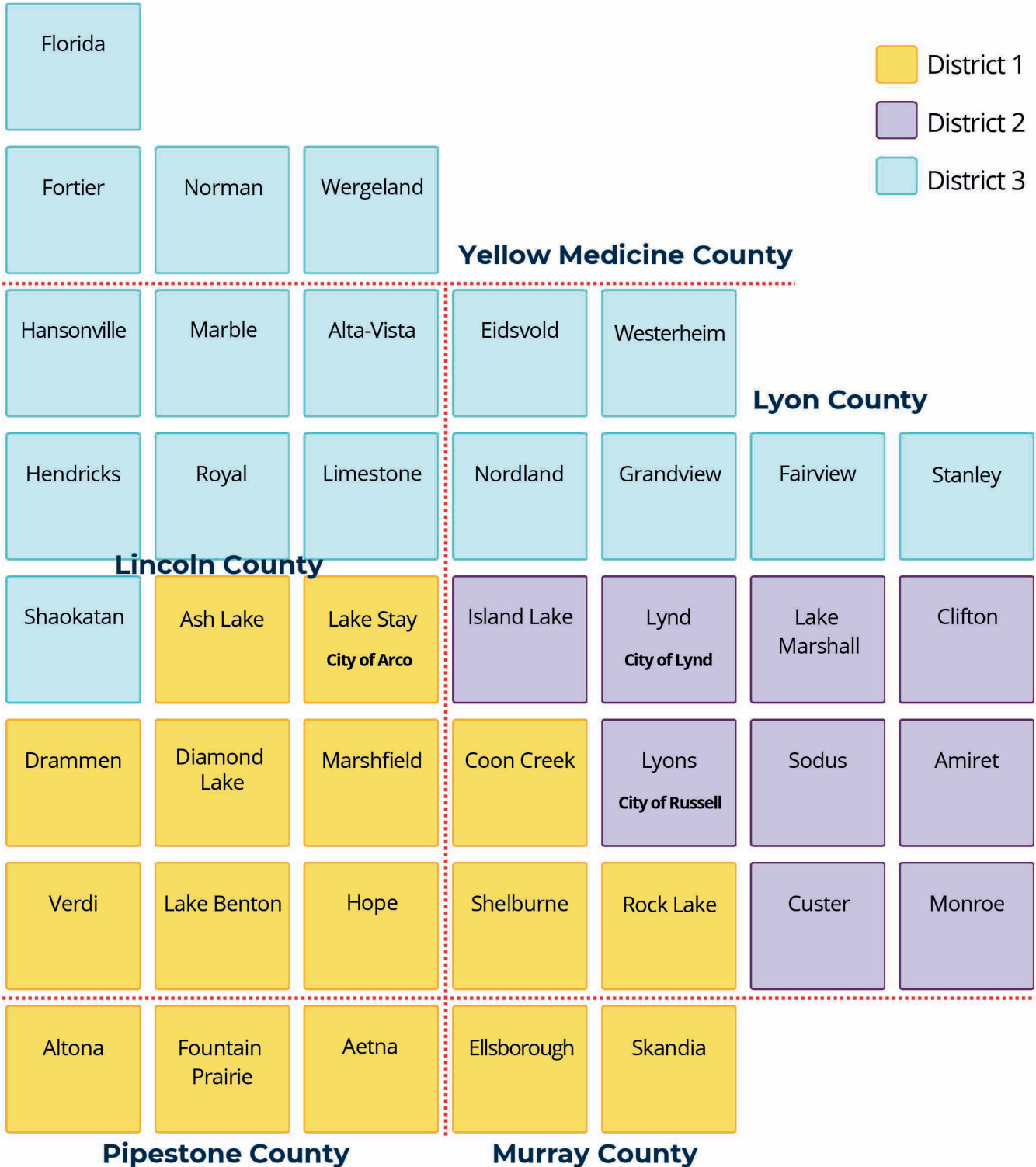
Damage from the storm not only affected poles, but also uprooted trees.



Bill Brisk, manager of operations at Black Hills Electric Cooperative, gives a morning briefing, updating the cooperative and assisting crews with storm recovery assignments.

DIRECTOR DISTRICT MAP

LYON-LINCOLN ELECTRIC



WHO?

Represents YOU

Board Structure and Election Process

Lyon-Lincoln Electric Cooperative is guided by a nine-member Board of Directors representing three districts across our service area. Directors are elected by the membership to serve three-year terms and must live in the district they represent. To ensure continuity and balanced representation, director terms are staggered so that each year, one director from each district is up for election. Members vote for one director per district. For additional details about director qualifications, responsibilities, and election procedures, please refer to the cooperative's by-laws on page 14 of this issue.

Local Leadership, Local Decisions

What makes Lyon-Lincoln Electric unique is that its Board of Directors is made up of local citizens who are also cooperative members. This structure ensures that decisions regarding policies, rates, and long-term planning are made locally and in the best interests of the membership—not by individuals in another state. Our directors are neighbors you may see at school events, community gatherings, or other local activities, reinforcing the cooperative's strong community connection.

Call for Director Candidates

Lyon-Lincoln Electric Cooperative is always seeking engaged, community-minded members to consider serving on the Board of Directors. If you have an interest in leadership, local decision-making, and helping guide the cooperative's future, we encourage you to explore this opportunity—or nominate someone you believe would be a strong representative for your district. Directors play a vital role in setting policy, overseeing long-term planning, and ensuring the cooperative continues to meet the needs of its members. Serving on the board is a rewarding way to give back and make a meaningful impact in your community.

Your Cooperative, Your Voice

As a member-owner, you have direct access to your cooperative and its leadership. If you have questions about board service, the nomination process, or the cooperative's operations, you're encouraged to reach out. You can contact Lyon-Lincoln Electric directly at 1-800-927-6276 or connect with your local director representative. Your involvement helps keep the cooperative strong, responsive, and locally led.

CURRENT LLEC BOARD MEMBERS

DISTRICT 1



Mary Gunnink



Scott Johnson



Kathy Schreurs

Includes all members whose residence, farmstead or place of business is located in Ash Lake, Lake Stay, Drammen, Diamond Lake, Marshfield, Verdi, Lake Benton, and Hope townships and in the City of Arco in Lincoln County. Also included in District 1 are the townships of Coon Creek, Shelburne, and Rock Lake townships in Lyon County, Altona, Fountain Prairie, and Aetna townships of Pipestone County, and Ellsborough and Skandia townships in Murray County.

DISTRICT 2



James Rokeh



Joel Buyck



Galen Grant

Includes all members whose residence, farmstead, or place of business is located in Island Lake, Lynd, Lake Marshall, Clifton, Lyons, Sodus, Amiret, Custer and Monroe townships in Lyon County as well as the Cities of Lynd and Russell.

DISTRICT 3



Jared Dritz



Dale Fier



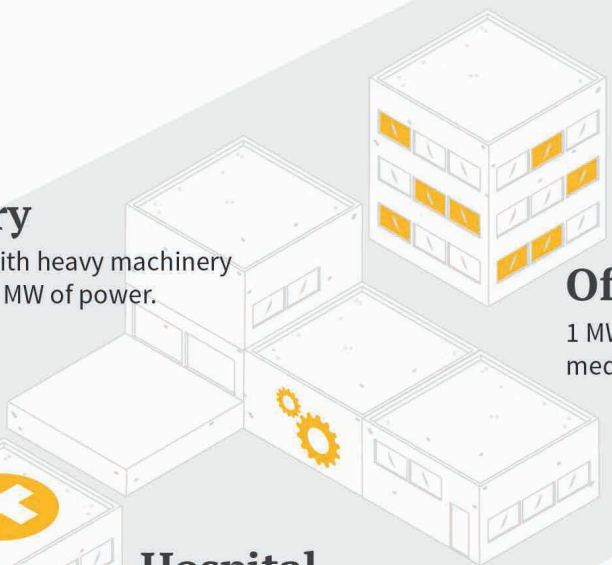
Mike Longtin

Includes all members whose residence, farmstead, or place of business is located in Florida, Fortier, Norman and Wergeland townships in Yellow Medicine County. Also included in District 3 are the townships of Hansonville, Marble, Alta Vista, Hendricks, Royal, Limestone and Shaokatan in Lincoln County, and Eidsvold, Westerheim, Nordland, Grandview, Fairview and Stanley townships in Lyon County.

What Can You Do With 1 Megawatt?

Factory

Facilities with heavy machinery can draw 1 MW of power.



Big Box Stores

1 MW will power a typical large retail store.

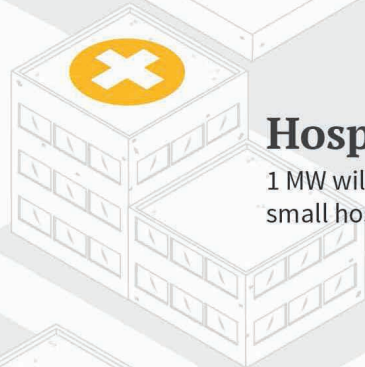


Office Building

1 MW can power several medium-sized office buildings.

Hospital

1 MW will power a small hospital.



Power Plant

Typical outputs:

Coal: 500 MW to 1 GW

Gas: 50 MW to 1 GW

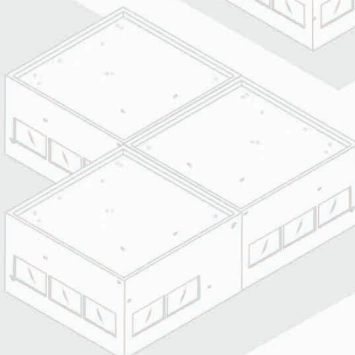
Nuclear: 500 MW to 1.5 GW

1 MW is 1 million watts of power.



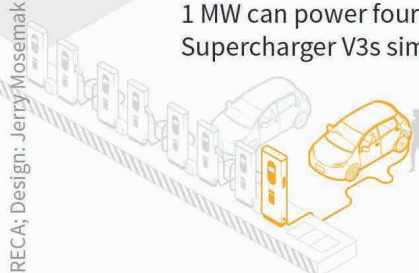
School

0.5 MW will power a medium-size public school.



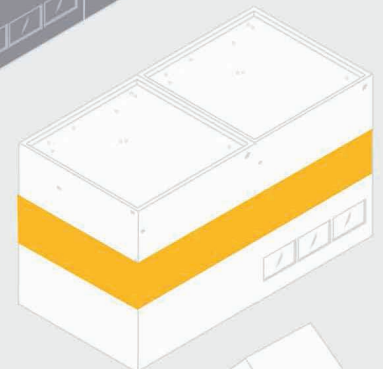
EV Charging

1 MW can power four Tesla Supercharger V3s simultaneously.



Data Center

1 MW will power one small data center.



Other facilities that can draw up to 1 MW of power:

- High-speed rail
- Large farms
- Wastewater treatment
- Stadiums

Residential

1 MW can power 750 to 1,000 homes.



WHAT IS A MEGAWATT?

Jacob Boyko

jacob.boyko@sdrea.coop

If you're a regular Cooperative Connections reader, you've probably seen the term "megawatt" countless times. From articles about new power generation facilities, energy-saving tips, major infrastructure projects or energy policy, megawatts come up again and again. But what does a megawatt actually mean?

Watts, Kilowatts, Megawatts & More

A megawatt is a unit of power that measures the speed at which energy is generated or used at a given time. A megawatt is 1,000 kilowatts (KW), or 1 million watts.

You may recognize watts from the labels on everyday household items like light bulbs and phone chargers. These numbers indicate the amount of power the device draws while operating.

Here are the wattages for some common household items:

- LED Light bulb – 5-20 Watts
- Refrigerator – 350-800 Watts
- Desktop PC – 100-800 Watts
- LED Television: 30-300 Watts
- Microwave – 700-1,200 Watts
- Hair Dryer – 1,500-2,000 Watts
- Clothes Dryer – 1,800-5,000 Watts

At East River Electric Power Cooperative, the generation and transmission cooperative that sells power to member co-ops in Eastern South Dakota and Western Minnesota, Jennifer Gross uses a modified bicycle to help put power into perspective.

The bike is stationary – the pedals power a small generator wired to several different kinds of light bulbs. Gross, who is East River's education and outreach coordinator, says the "pedal power bike" demonstrates energy use in a tangible way and highlights the difference of energy-efficient products.

"It's actually quite difficult for the person pedaling to generate electricity consistently for more than a few minutes," Gross said.



Jennifer Gross demonstrates energy generation and consumption. Submitted Photo

"When they're pedaling to power the inefficient, old-school incandescent light bulbs, they can pedal for about one minute and not even keep it at 200 watts the whole time."

The electric grid experiences the most strain during peak demand times – the hours before and after work and school when most people are home doing laundry, watching TV etc.

In communities with hundreds to thousands of homes and businesses, electricity demand grows large enough to be measured in megawatts – the unit equal to 1,000 KW.

Your electric co-op's electricity is generated by Basin Electric Power Cooperative, which was formed in the 1960s by electric co-ops in the upper Midwest to generate electricity for co-ops. Serving over 3 million consumers across nine states, Basin generates power from its owned and leased assets, which include coal, natural gas, solar and wind. Basin's generation capability is so massive that it's measured in gigawatts – the unit equal to 1,000 MW.

Basin reports a maximum generating capacity of about 8,427 MW – or 8.427 GW. That figure reflects every available generation resource running at full output, including the oil-fueled peaking units used during times of high demand, along with purchases from the Western Area Power Administration and the Southwest Power Pool energy market.

On an even larger scale, the total installed generation capacity in the U.S. reaches the terawatt level, totalling about 1.3 TW, which is equal to 1,300 GW, 1.3 million MW or 1.3 billion KW – enough to simultaneously run about 1 billion hair dryers!

$$\begin{aligned}
 &1 \text{ Million Watts} \\
 &= \\
 &1,000 \text{ Kilowatts} \\
 &= \\
 &1 \text{ Megawatt} \\
 &= \\
 &1/1,000 \text{ Gigawatt}
 \end{aligned}$$

Your Co-op's Megawatts

As a co-op member, you're a part-owner of Basin Electric's generation resources. Here's a look at several of those facilities.



Antelope Valley Station
Beulah, N.D. • 1984
900 MW • Coal



Bison Gen. Station
Epping, N.D. • 2030
1,490 MW • Nat. Gas



Pioneer Gen. Station
Williston, N.D. • 2013
822 MW • Nat. Gas



Crow Lake Wind
White Lake, S.D. • 2011
172 MW • Wind



Wild Springs Solar
New Underwood, S.D.
2024 • 114 MW • Solar

LLEC bylaws pertaining to Director positions

BYLAW ARTICLE III. DIRECTORS

SECTION 1. GENERAL POWERS.

The business and affairs of the Cooperative shall be managed by a board of nine (9) directors, which shall exercise all of the powers of the Cooperative except such as are by law or by the articles of incorporation of the Cooperative or by these bylaws conferred upon or reserved to the members.

SECTION 2. TENURE AND QUALIFICATIONS.

a) **TENURE.** At the annual meeting of the members, one director from each of the districts into which the Cooperative is divided shall be elected by ballot by and from the members for a term of three years, or until his successor shall have been elected and shall have qualified.

b) **QUALIFICATIONS.** No member who is a person, joint tenant, trustee of a member trust, or partner of a member partnership shall be eligible to become or remain a director or hold any position of trust in the Cooperative who:

1) is not a bona fide member and resident of the district from which he or she is elected or for which he or she is a candidate; ("bona fide resident" shall be defined as residing at and continuously and materially purchasing electric service at a location within any director district from which the director is elected or for which he or she is a candidate for at least nine (9) months each calendar year);

2) is in any way employed by or substantially financially interested in an enterprise substantially competing with the Cooperative or any Cooperative-affiliated business;

3) within three (3) years was a full-time or part-time employee of the Cooperative or an entity wherein the Cooperative has an ownership interest;

4) does not have the legal capacity to enter into a binding contract;

When membership is held jointly by two natural persons, either one, but not both, may be elected a director, provided, however, that neither one shall be eligible to become or remain a director or to hold a position of trust in the Cooperative unless both shall meet the qualifications herein above set forth.

If a corporation is a member then a duly appointed representative of said corporation can be a director if said representative is a bona fide permanent resident of the district for which he/she meets the qualification requirements listed in this section. A member that is an authorized farm corporation or family farm corporation may select an individual member residing on or actively operating the farm to be eligible for election to the board.

Upon establishment of the fact that a director is holding the office in violation of any of the foregoing provision, the Board of Directors shall remove such director from the office.

Nothing in this Section contained shall or shall be construed to affect in any manner

whatsoever, the validity of any action taken at any meeting of the Board of Directors.

SECTION 3. NOMINATION AND ELECTION OF DIRECTORS.

a) **Nomination at District Meetings.** The Board of Directors shall not less than One Hundred Twenty (120) days before the date of the meeting of the members at which Directors are to be elected, appoint a committee on nomination, which said committee shall consist of not less than three nor more than nine members who shall be selected from the three districts so as to insure equitable representation. No officer or member of the Board of Directors shall be appointed a member of the District Nominating Committee. The nominating committee shall, not less than Ninety (90) days before the meeting of the members at which directors are to be elected, nominate one or more candidates for the Board of Directors from such District, and shall by the time stated prepare and post at the principal office of the Cooperative a list of nominations for the Directors to be chosen from such District. There may be additional names for nominations for the Directors to be chosen from such District presented at the District Meeting by Petition of ten or more members residing in such District.

Not less than Thirty (30) days nor more than Sixty (60) days before any meeting at which directors are to be elected, the board of directors shall call a separate meeting of the members of each district at a suitable place in such district for the purpose of selecting two persons as candidates for director to represent the members located within such district. The notice of such meeting shall be given to each member located in such district as provided in Section 4 of Article II and shall indicate the district to which such member belongs. The notice shall describe the person or persons nominated by the District Nominating Committee as candidates for director to be made at the meeting. Said notice shall indicate that there may be additional names for nomination as candidates for director to be chosen from the District presented at the District Meeting by petition of ten or more members residing in said District but said additional name or names as candidates for director may only be made by said petition. The meeting shall, however, be open for discussion of any other matters pertaining to the business of the Cooperative, regardless of whether or not such matters were listed in the notice of the meeting, and recommendations with respect thereto may be submitted to the board of directors or the entire membership.

The district meeting shall be called to order by a director representing the district or by another designated representative of the board of directors, or in his absence, by any member residing within the district. The members shall then proceed to elect a chairman, who shall be someone other than a director, and who shall appoint a secretary to act for the duration of the meeting. Ten (10) members residing in the district present at such duly called district meeting shall constitute a quorum. Members of other districts present at the

meeting may be heard but shall have no vote. The candidates for director nominated by the committee and by petition shall be nominated at the meeting. Candidates must be members residing in the district and must possess the qualifications for director specified in Section 2 of Article III of these Bylaws.

Voting shall be by ballot and proxy voting shall not be permitted at any district meeting. Each member may vote for one candidate. The two candidates receiving the highest number of votes shall be declared the official candidates of the district. The minutes of such district meeting shall set forth, among other matters, the name of each person nominated at the meeting and the number of votes received by each, and shall specify the two official candidates of the district. A certified copy of the minutes, signed by the Secretary and the Chairman of the district meeting, shall be delivered to the Secretary-Treasurer of the Cooperative within five days after such district meeting.

b) **Election of Directors.** At all meetings at which directors are to be elected, the Secretary-Treasurer of the Cooperative shall place in nomination the names of the official candidates of each district from which a director is to be elected. Additional nominations for director may not be made from the floor. Election of directors shall be by printed, photocopied, or electronic ballot. The ballots shall list the candidates selected at the district meetings, the names to be arranged by districts and in the order of preference indicated by the respective district vote. Each member of the Cooperative shall be entitled to vote for one candidate from each district from which a director is to be elected. The candidate from each such district receiving the highest number of votes at the meeting shall be declared as the director to represent such district. Voting may include voting by mail or electronic ballot as set out in Article II, Section 8. In case of a tie vote for election of the nominees to the Board, at the Member Meeting, the designated Chairperson of the Member Meeting, for the Election of Directors, shall determine the tie by lot.

If for any election there is only one nominee for each of the three board positions so that each district nominee is running unopposed, ballots need not be provided by mail or electronically to the members and the election shall be made by the designated Chairperson of the Member Meeting, for the Election of Directors, entertaining a motion to elect the single candidates by a voice vote.

The members may at any meeting at which a director or directors shall be removed as hereinbefore provided elect a successor or successors thereto without compliance with the foregoing provisions with respect to nominations provided, however, that the director or directors so chosen must reside in the same district as the director or directors in respect of whom the vacancy occurs. Notwithstanding anything in this section contained, failure to comply with any of the provisions of this section shall not affect in any manner whatsoever the validity of any election of directors.

ELECTRICAL SAFETY AT HOME:

Maintenance & Yard Work Tips

As warmer weather approaches, many homeowners turn their attention to home projects and yard work. While these tasks can improve the look and safety of your property, they can also introduce electrical hazards if proper precautions aren't taken. A little awareness goes a long way in preventing accidents, injuries, and damage.

Around the Home

- Inspect cords and outlets regularly. Replace any cords that are frayed, cracked, or damaged. Avoid overloading outlets and power strips.
- Use GFCI outlets in kitchens, bathrooms, garages, basements, and outdoor areas. These outlets help protect against electric shock, especially in damp locations.
- Turn power off before repairs. Always shut off the breaker before working on outlets, switches, or fixtures. If you're unsure, call a licensed electrician.
- Keep electricity away from water. Never use electrical tools or appliances with wet hands or near standing water.
- Avoid DIY electrical shortcuts. Temporary fixes like using extension cords as permanent wiring can increase the risk of fire and should be avoided.

Outdoor & Yard Work Safety

- Look up before you work. Be aware of overhead power lines when using ladders, pruning trees, or installing antennas. Maintain a safe distance at all times.
- Call before you dig. Underground utility lines may be hidden. Contact 811 before digging to have utilities marked.
- Use outdoor-rated tools and extension cords. Make sure cords are designed for outdoor use and keep them away from standing water.
- Store equipment properly. Lawn mowers, trimmers, and other powered tools should be unplugged and stored in dry areas when not in use.

When in Doubt

Electricity is not something to take lightly. If a project feels unsafe or beyond your skill level, it's best to contact a qualified professional. Protecting yourself, your family, and your home is always worth the extra step.

Staying mindful of electrical safety during home maintenance and yard work helps ensure your projects are productive—and accident-free.

If There is a Downed Powerline: **THINK BEFORE YOU ACT**

An overhead power line can become damaged or fall due to a severe storm, car accident, public damage or other reasons. If you see a downed power line, take these actions:



Consider all power lines energized and deadly.



Stay at least 50 feet away.



Call 9-1-1 or the utility to report the downed line.



Do not approach it or try to move it with another object.



Do not get out of a vehicle or cab.



Do not approach the scene.



Warn others to stay away.



Turn around and go another way.

**Even if you do not see a downed line, realize one could be hidden by storm debris, water, snow or ice.*

OTHER THINGS TO KNOW



Energized downed lines spread voltage through the ground or nearby objects.



If you go near a downed line, you can become electricity's path to ground.



You cannot tell if a power line is live just by looking at it.



Even if a power line appears coated, it is never safe to go near it.

While transmitting and distributing power is typically safe, extreme scenarios like downed power lines are extremely dangerous. Never approach a downed power line.

For additional electrical safety tips, go to [SafeElectricity.org](https://www.SafeElectricity.org)



MARCH 7
Ag Day
 10 a.m.-2 p.m.
 Washington Pavilion
 Sioux Falls, SD
 605-367-6000

Washington Pavilion Photo

To have your event listed on this page, send complete information, including date, event, place and contact to your local electric cooperative. Include your name, address and daytime telephone number. Information must be submitted at least eight weeks prior to your event. Please call ahead to confirm date, time and location of event.

MARCH 5
SD Jazz Festival
 7:30 p.m.
 Johnson Fine Arts Center
 Aberdeen, SD

MARCH 7
Free Christian Men's Event
 The Barn at Aspen Acres
 8:30 a.m.-1:30 p.m.
 Spearfish, SD
 Register: RiseUpMen.com

MARCH 7
Southern Hills Holistic Fair
 9 a.m.-3 p.m.
 Mueller Civic Center
 Hot Springs, SD

MARCH 7-8
The Black Market
 Sat. 9 a.m.-5 p.m.
 Sun. 10 a.m.-3 p.m.
 W.H. Lyon Expo Building
 Sioux Falls, SD
 605-332-6004

MARCH 14-15
Philip Area Annual Rod & Gun Show
 Sat. 9 a.m.-5 p.m.
 Sun. 9 a.m.-3 p.m.
 American Legion Hall
 Philip, SD
 605-859-2135

MARCH 14
St. Uhro Finnish Festival
 11 a.m. Main Street Parade
 12 p.m. Community Ctr. Lunch
 Lake Norden, SD
 605-881-1758

MARCH 14
SNOLF (Snow Golf) Tournament
 Webster, SD
 Contact: Buster's Resort
 605-345-2787

MARCH 20-21
Badlands Quilters Getaway
 Fri. 5:30 p.m. Start
 Sat. 8 a.m. Start
 Wall Community Center
 Wall, SD
 605-279-2807

MARCH 20-22, 27-29
Mighty Corson Art Players
 March 20-21, 27-28: 7:30 p.m.
 March 22, 29: 2:30 p.m.
 Corson Playhouse
 Corson, SD
 www.mightycorson.com

MARCH 27
East Dakota Chapter NWTf 33rd Annual Banquet
 Ramkota Expo Hall
 Sioux Falls, SD
 605-940-0702

MARCH 28
Coteau Prairie Masters Gardeners Ready, Set, Grow
 9 a.m.-12 p.m.
 Codington Cty. Extension Cplx.
 Watertown, SD

MARCH 28
VFW Teener Baseball Benefit Vegas Night
 Social: 4:30 p.m., Meal: 6 p.m.
 Tyndall, SD

APRIL 3
Bachelors of Broadway: Gentlemen of the Theatre
 7 p.m.
 Johnson Fine Arts Center
 Aberdeen, SD

APRIL 5
Easter Sunrise Service
 7 a.m.
 Mount Rushmore
 605-391-9156

APRIL 9
McCrossan Wildest Banquet Auction in the Midwest
 Jimmy Buffett Tribute
 Polynesian Paradise Dancers
 Sioux Falls, SD
 www.mccrossan.org

APRIL 9-11
Annual Schmeckfest
 German Heritage Celebration
 Freeman, SD
 605-925-4237
 www.schmeckfest.com

APRIL 18
Brookings Quilt Show XII
 9 a.m.-5 p.m.
 Admission: \$10
 Dakota Bank Center
 Brookings, SD
 605-690-3246

APRIL 18
Tri-Valley Chorus 75th Annual Show
 4 p.m.
 Centerville, SD
 605-201-9398

Note: We publish contact information as provided. If no phone number is given, none will be listed. Please call ahead to verify the event is still being held.