



COOPERATIVE CONNECTIONS



Anglers from across the region compete in the Mobridge Ice Fishing Tournament each year to try their luck and test their skills

Hook, line and auger

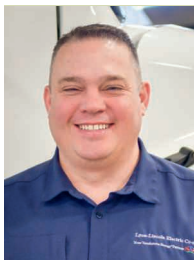
Inside the Mobridge ice fishing tourney
Pages 8-9

Shake the blues with winter outdoor fun
Pages 12-13

Looking forward to 2023

This month's newsletter should get to your mailbox right before the holidays, so let me start by wishing everyone Happy Holidays.

This time of year, has us reflecting on the past year and looking forward to the upcoming year. Our look forward manifests itself into the cooperative's 2023 budget and financial forecast. The budget will be reviewed with the board at the budget meeting scheduled for December 12th and then again at the regularly scheduled board meeting on December 19th. The budget process allows an opportunity for the board and employees of the cooperative to set priorities and lay out the roadmap on how we accomplish those priorities in the upcoming year. The budget provides us with the information needed to make corrections throughout the year if things are not going as planned. Please check next month's article to see how budget discussion turned out for the upcoming year.



Tim O'Leary
General Manager

The board reviewed the yearly audit report at the November board meeting. Parker Van Zee, our audit manager from Eide Bailly, reviewed the audit report with the board and answered questions from the board throughout the presentation. Parker reported that the cooperative was given a clean audit report and that the financial statements reviewed present fairly, in all material respects, the financial position of the cooperative as of August 31, 2022 and 2021, and the results of its operations and its cash flows for the years ended in accordance with accounting principles generally accepted in the United States of America. Kyle Magnuson- 854700. It is always nice to get through the audit with a clean opinion and I would like to thank all of the employees of the cooperative for their work throughout the year.

The board approved an estimated Capital Credit retirement for December in the amount of \$653,373.61.

The retirement will include payments for capital credits allocated in 2000, 2001 and 2016 and Basin capital credits allocated in 2002, 2003, and 2004. For those eligible to receive a retirement, the retirement appeared as a bill credit on the bill that you received at the beginning of December.

The board set the 2022 Annual Meeting date for Wednesday, June 7th and the meeting will be held at the cooperative's headquarters building in Tyler. The board continues to look for members willing to serve on the nominating committee or be nominated to serve as a director candidate for next year's director elections. The committee will meet in February to identify director candidates. If you are interested in serving on the nominating committee, know someone that would make a good candidate to serve on the board or would like to be a candidate, please give the office a call and we can answer your questions and provide additional information.

District meetings will be held on April 10th, 11th, and 13th at 7 pm. We will provide additional information in an upcoming newsletter.

We are getting more requests for solar interconnections as consumers look at installing small solar projects at their service locations. Brian has written an article for this newsletter that answers some of the most commonly asked questions that we receive from our members. If you have additional questions, please give the office a call and Brian can answer them.

We would also like to thank Randy Kiefer for his 38 years of service to the members of Lyon-Lincoln Electric Cooperative. Thank you, Randy, and we hope you have a long and healthy retirement.

Thank you for another great year and Happy Holidays!

COOPERATIVE CONNECTIONS

LYON-LINCOLN ELECTRIC

(ISSN 1540-6989)

Board of Directors

Sandy Ludeman, Tracy – President
Dale Fier, Taunton – Vice President
Kathleen Schreurs, Tyler – Sec./Treas.
Jared Dritz, Porter
Galen Grant, Russell
Mary Gunnink, Lake Benton
Scott Johnson, Tyler
Mike Longtin, Taunton
James Rokeh, Minneota

Staff and Personnel

Tim O'Leary – General Manager
Lyle Lamote – Line Superintendent
Kristi Jensen – Finance Manager
Brian Jeremiason – Manager of
Marketing & External Relations
Rochelle Borresen – Accountant
Lisa Hauswedell – Billing Clerk
Jessica Gums – Executive Assistant

Staff and Personnel

Journeyman Linemen:
Ross Birath
Dan Tutt
Tyler Blomme
Tyler Sand
Nathan Pavek
Trent Skjefte – Apprentice Lineman
Sam Rohde – Apprentice Lineman
Wade Thooft – Operations Staff
Assistant
Alan Fischer – Warehouse
Coordinator/Work Order Clerk

www.llec.coop

Lyon-Lincoln Electric hours are:
8:00 AM – 4:30 PM, Mon. thru Fri.

LYON-LINCOLN ELECTRIC COOPERATIVE CONNECTIONS is published monthly by Lyon-Lincoln Electric Cooperative, 205 W. Hwy. 14, PO Box 639, Tyler, MN 56178. Electric co-op members devote 50 cents from their monthly electric payments for a subscription. Non-member subscriptions are available for \$12 annually. Periodicals Postage Paid at Tyler Post Office, Tyler, MN 56178 and at additional mailing offices.

POSTMASTER: Send address changes to: Lyon-Lincoln Electric Cooperative Connections, PO Box 639, Tyler, MN 56178; Telephone (507) 247-5505; Toll Free 1-800-927-6276; Fax (507) 247-5508.

Jessica Gums, Editor



Randy Keifer began his career with Lyon-Lincoln Electric in November of 1984. He has held the titles of Apprentice Lineman, Journeyman Lineman, and Line Foreman. He has been dedicated to serving our members for just over 38 years! What may seem like a lifetime to some, has gone by in a flash for Randy and he is officially ready to move on to the next phase of his life- Retirement.



When asked what some of Randy's greatest memories were as a lineman, he included major storm damage repair, not only for Lyon-Lincoln but also answering the call for help from other co-ops in their time of need. Randy has been through them all, working hard to restore power. Another career milestone for Randy, pictured at left, was being able to compete and take 5th place in the 2005 international lineman's Rodeo. The competition attracts the best linemen from around the world to compete in events based on traditional lineman tasks and skills.

From dawn until dusk, on weekends and holidays, in good weather and in bad, Randy happily rode around in bucket trucks, climbed wooden poles, and worked tirelessly to keep the lights on. You may ask yourselves, why? The truth is, Randy loved his life out on the lines, his passion and pride for his job kept him going and he wouldn't have changed a thing. In fact, he said "I would do it all over again, if given the chance.

Randy is looking forward to a new chapter of his life with his wife, Thea, by his side. Randy plans to enjoy the extra time he now has with their family, especially their grandkids. He also has hunting and fishing on his retirement list.

A BIG thank you to Randy for his years of dedicated service. Enjoy your well-deserved retirement!

Tips to use your electric blanket wisely

Heating pads and electric blankets cause around 500 fires throughout the U.S. each year. Almost all of these fires involve electric blankets more than 10 years old.

Learn how to stay safe and injury-free.

- Heating appliances should never be left unattended or used while sleeping.
- Do not plug electric blankets into an extension cord or power strip, as they could overheat and cause a fire.
- Look for dark, charred, or frayed spots or electrical cords that are cracked or frayed. Replace any worn or old heating pads or electric blankets.
- Never fold electric blankets when in use. Folded or tucked-in electric blankets could overheat and cause a fire.
- When purchasing electronics, including electric blankets, be sure to only purchase from reputable retailers. Purchase devices that have been approved by a nationally recognized testing laboratory.
- Do not allow anything to rest on top of a heating pad or electric blanket when it is in use. It may cause the device to overheat.
- There are two types of personal heating appliances: electric blankets and heating pads that are placed directly on the mattress. They are not meant to be used interchangeably or at the same time.

Gums wins Connections annual recipe contest

Lily Gums of Clear Lake has been selected winner of the annual *Cooperative Connections* member recipe contest.

Gums submitted a beverage recipe she calls "Swamp Water" that was published in the April 2022 issue of the magazine. She received a \$25 gift card for her submission. Congratulations, Lily!

She is a member of H-D Electric Cooperative based in Clear Lake.

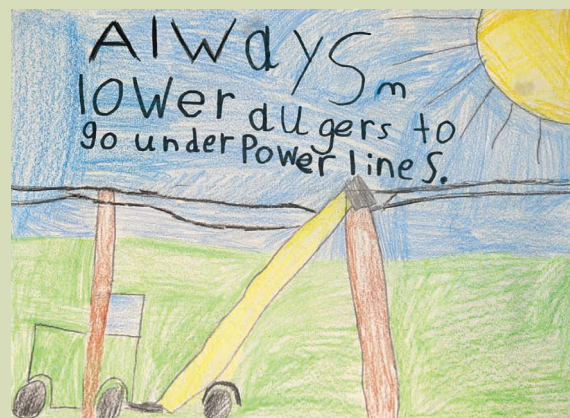


CO-OP LEADERS SERVE THEIR MEMBERS AND CONSTITUENTS



Ryan Maher is both a state senator and a board member at Moreau-Grand Electric Cooperative in Timber Lake. He is one of three cooperative leaders who play unique roles in serving their co-op consumers while also serving their constituents as state lawmakers during the legislative session in Pierre.

To view the comments and insights of these lawmakers and learn more about how electric cooperatives work to improve our communities, visit Cooperative Connections Plus by scanning the QR code at right.



Be safe around power lines

Weston Kling

Weston Kling, age 7, urges equipment operators to always lower augers to accommodate for overhead power lines. Weston is the son of Tyler and Alexis Kling of Rapid City. They are members of West River Electric based in Wall.

Kids, send your drawing with an electrical safety tip to your local electric cooperative (address found on Page 3). If your poster is published, you'll receive a prize. All entries must include your name, age, mailing address and the names of your parents. Colored drawings are encouraged.

SUPER SOUPS

VEGGIE CHEESE SOUP

Ingredients:

1/3 c. shredded carrots
1/3 c. chopped celery
3/4 c. broccoli flowerettes (fresh or frozen)
2 tbsp. diced onion
1/4 c. butter or margarine
6 tbsp. flour
2 c. chicken broth
2 c. milk
2 c. Velveeta cheese, cubed

METHOD

Cook carrots, celery and broccoli in 1 cup water until tender crisp. Saute onions in butter. Add flour to blend. Add milk and stir to make white sauce then add cheese and stir until melted. Add chicken broth and vegetables in remaining water. Blend until smooth.

Nancy Stenson, Fort Pierre

CHEESEBURGER SOUP

Ingredients:

2 lbs. ground beef or ground chuck
2 carrots, chopped
1/2 med. onion chopped
1/2 stalk celery, chopped
5 med. peeled potatoes, chopped
4 c. turkey or chicken broth
3 c. half and half
1 tsp. poultry seasoning
2 tsp. garlic powder
1 lb. Velveeta cheese, chunked
2 tbsp. butter
salt and pepper to taste

METHOD

Brown ground meat in large pot. Drain and return to pot. Add butter, onion, carrots, celery and potatoes. Cook for 5 minutes. Add broth, poultry seasoning, garlic powder and continue cooking until vegetables are tender. Add half and half and Velveeta cheese and continue heating until cheese has melted. Salt and pepper to taste.

Kathleen Meier, Firesteel

CHICKEN FAJITA SOUP

Ingredients:

1 tbsp. oil
1 med. green bell pepper, cut into 1/2-inch chunks
1 med. red bell pepper, cut into 1/2-inch chunks
1 sm. onion, finely chopped
3 tbsp. tomato paste
1 lb. boneless skinless chicken breasts, cut into 1/2-inch cubes
1 pkg. McCormick® Organics Fajita Seasoning Mix
3 c. chicken stock
1 can (14.5 ounces) petite diced tomatoes, drained
1 c. frozen corn
1 c. tortilla strips

METHOD

Heat oil in large saucepan or Dutch oven on medium-high heat. Add peppers and onion; cook and stir 2 minutes. Add tomato paste; cook and stir 2 minutes. Stir in chicken, Seasoning Mix, stock, tomatoes and corn. Bring to boil. Reduce heat; simmer 20 minutes or until chicken is cooked through. Ladle soup into bowls. Sprinkle with tortilla strips. Serve with desired toppings.

mccormick.com

Please send your favorite recipes to your local electric cooperative (address found on Page 3). Each recipe printed will be entered into a drawing for a prize in December 2023. All entries must include your name, mailing address, phone number and cooperative name.

October Board Meeting Minutes

The regular monthly meeting of the Board of Directors of Lyon-Lincoln Electric Cooperative was held on Monday, October 24, 2022. Directors present were James Rokeh, Kathy Schreurs, Jared Dritz, Galen Grant, Scott Johnson, Mary Gunnink, Sandy Ludeman, Dale Fier, and Mike Longtin. Also present at the meeting were General Manager, Timothy O'Leary, Finance Manager, Kristi Jensen, and Attorney, Michael W. Cable.

The Board and others in attendance stood and gave the Pledge of Allegiance. President Ludeman then called the meeting to order and routine business was conducted including approval of the September 26, 2022 meeting minutes, a review of the check schedule, applications for memberships, and shares to be cancelled.

Kristi Jensen, Finance Manager, gave the Financial and Statistical Report for the period ending August 31, 2022. Ms. Jensen then reviewed information with the Board that pertained to Lyon-Lincoln Electric's Capital Credit General Retirement for 2022 with an estimated payment for December, 2022. Mr. O'Leary and Ms. Jensen also gave the Board an update on the amount requested to be paid by FEMA as a result of two storms occurring in Lincoln County on May 12, 2022 and in Lyon County on May 30, 2022.

Lyle Lamote, Line Superintendent,

reviewed with the Board the September Outage Report and advised the Board of the September Safety Meeting which involved the topic of Tree Trimming Safety which was conducted by Shawn Marthaler from MREA. Mr. Lamote also indicated that the Marble Substation work has been finished, provided a Ghent Substation update, and described jobs that the linemen were presently working on including various underground jobs and installation of new meters.

Brian Jeremiason, Manager of Marketing and External Relations, reviewed with the board his report which included information on the "Who Powers You" contest that honors people who make a difference in their cooperative communities, the 2023 Basin Scholarship Application period which is now open, as well as the offering of scholarships through the Operation RoundUp Program and the Touchstone Energy Scholar of the Week Program, and an update on questions received on solar installations for home use.

General Manager Timothy O'Leary then gave his manager's report; some of the items reviewed were as follows: The Board reviewed the September power bill and sales to members and compared those figures to budgeted amounts, looked at line loss for the system, and informed the board that the strategic plan had been updated. Mr. O'Leary reported on East River's

MAC meeting that he attended, then reviewed with the board upcoming meetings, events, and notices.

The Board reviewed the August Cyber Security Program Report, set a budget meeting date, reviewed the Station Service Agreement to be entered into between Lyon-Lincoln Electric Cooperative, Inc. and Buffalo Ridge Wind, LLC, adopted a resolution amendment to 125 Plan, and adopted a resolution to approve the 2023 Load Forecast prepared by Basin Electric Power Cooperative.

The Board recessed for lunch at 12:13 o'clock P.M. and reconvened at 12:54 o'clock P.M. During that time, the Board watched the East River Electric Power Cooperative, Inc. Monthly Video Report which included the Basin Summary. The directors then reported on training sessions and meetings attended and reviewed and discussed upcoming meetings and educational workshops to be held.

With there being no further business to come before the board, a motion was made and carried to adjourn at 1:46 o'clock P.M.

October Outage Report

(10 or more consumers)

There were no outages for the month of October, 2022.

Rokeh goes for the gold



Pictured from left to right: Director, James Rokeh, with Board President, Sandy Ludeman.

Lyon-Lincoln Electric Director, James Rokeh, was recently presented his Director Gold Credentials from Board President Sandy Ludeman. James recently earned his Director Gold Credential from the National Rural Electric Cooperative Association.

The Director Gold Credential recognizes directors committed

to continuing their education beyond the Credentialed Cooperative Director and Board Leadership Certificate and who desire a tangible credential that demonstrates their ongoing commitment to advancing their knowledge and performing their fiduciary duty to the best of their ability. Congratulations James!



Win Money

Find Your Name & Member Number and Win \$

The tradition of listing member names and numbers in the newsletter continues in the Cooperative Connections. If you find your name and member number, call the office and let us know and you will receive a \$20 energy credit.

In last month's Cooperative Connections, Gary Crowley and Marlene Hoeft spotted their names and will receive an energy credit. Once again, there are two new names and numbers hidden in this issue. Good Luck!

RECIPES NEEDED FOR

The Country Cookin'

cookbook

Help us create another great cookbook by submitting your favorite recipes as well as recipes for the cookbook's "Wild Game" section.

Submit recipes via email to ajohannsen@eastriver.coop or contact your local cooperative for more information.

Energy Saving Tip

Blocked air vents force your heating system to work harder than necessary and increase pressure in the ductwork, which can cause cracks and leaks to form. Make sure all air vents are unobstructed from furniture, drapes, or other items to ensure sufficient circulation throughout your home. If necessary, purchase a vent extender, which can be placed over a vent to redirect air flow from underneath furniture.

Source: energy.gov

ICE FISHING IN MOBRIDGE



The annual Mobridge Ice Fishing Tournament attracts more than 1,000 avid cold-weather anglers. *Photo by Mobridge Outdoors*

Mobridge Ice Fishing Tournament offers fun and friendly competition

Billy Gibson

editor@sdrea.coop

Last fall, the world of competitive walleye fishing was shaken with a startling saga of deception and skulduggery worthy of a Tom Clancy novel.

Social media lit up showing the dramatic moment a tournament director in Ohio shouted at the top of his lungs with horror and disgust: “We got weights in fish! We got weights in fish!”

Suspicion had long surrounded a pair of locals who ultimately got nabbed stuffing lead weights down the gullets of their walleye. After the two sparked skepticism with a catch of nearly 36 lbs. - one-third heavier than the runners-up - the director gutted the fish right in front of the entire field of wary competitors and held aloft several shiny orbs the size of steel ping-pong balls.

The viral video received more than 10 million views as cameras captured the chaotic scene with one of the accused hanging his head in shame (his partner had slithered away to his truck) while fellow competitors cursed and threatened to inflict bodily harm upon the sly anglers who were later indicted on four felony counts.

Vinson Dargatz is pretty sure nothing close to that degree of high drama will be replicated at the 22nd Annual Mobridge Walleye Ice Fishing Tournament set for Jan. 14. Based on his experience participating in the event over the past 12 years, this competition is more fisherman-friendly and the atmosphere is much more focused on fun.

Dargatz, an apprentice electrician at Lake Region Electric based in Webster, has continued to make the four-hour trip from his home to Mobridge mostly

because of the fellowship and the relaxed, laid-back vibe of the festivities.

He typically gets together with his two brothers and three cousins for the tournament that he describes as a “yearly ritual.”



Vinson Dargatz is shown with one of his prize catches.

“We always have a lot of fun” he said. “We used to just bring a portable shack out on the ice and sit on some buckets while we fished. But now that we’ve gotten older, softer and a little smarter, we have an Ice Castle and we fish and hang out and grill some burgers.”

Number of two-person
fishing teams competing

551

in last year's Mobridge
Ice Fishing Tournament

Dargatz confesses that the purchase of the 8 x 16-foot Ice Castle was actually his wife's idea. When it's time for an outdoor fishing excursion, the entire family with two boys and a girl always likes to come along. And mom insists on having adequate accommodations.

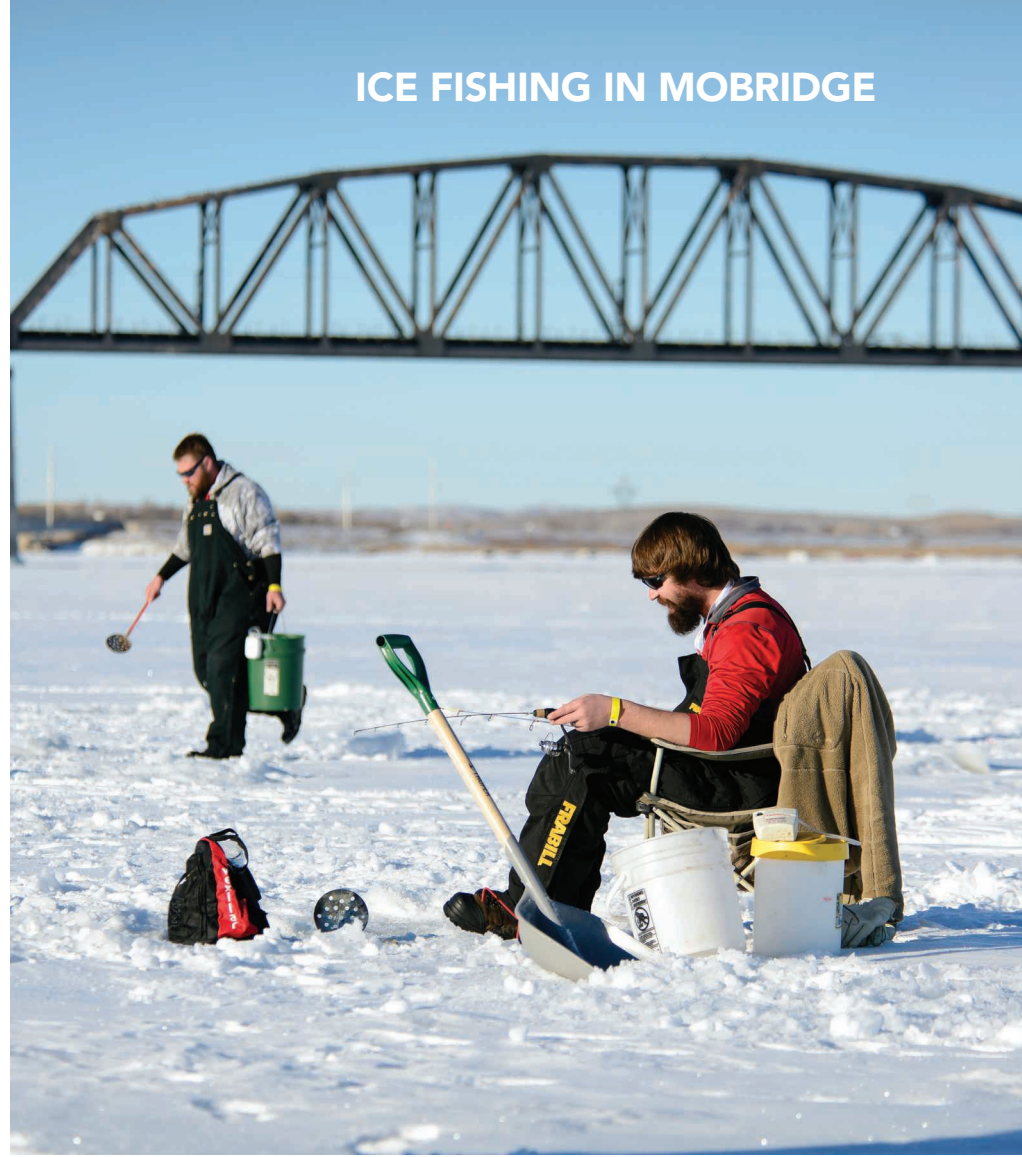
But Dargatz said when it comes to the annual winter escapes to Mobridge with the fellas, the family has to find something else to do. Besides, the town already doubles in size during tournament weekend and if every angler brought hangers-on in tow, Mobridge might expand to the size of Sioux Falls.

FILLED TO CAPACITY

Lately, the walleye population is standing less of a chance for survival against the increasing number of competitors testing their luck and skill in the annual tournament. The field has ballooned to the point of being capped at 551 two-person teams with fishermen swarming in from 16 different states.

Only so many humans can be stuffed into the town's expo center where the group events are held.

All of these developments have bewildered Jeff Jackson, one of the tournament's founders and owner of the Wrangler Inn in Mobridge. He recalls more than two decades ago sitting around the table with a group of town leaders who were trying to figure out a way to attract visitors to the area and capitalize on all the outdoor adventure the Missouri



The Mobridge Ice Fishing Tournament draws eager competitors from 16 different states.

Photo by Travel South Dakota

River and Lake Oahe have to offer.

In the first year, 50 eager contenders were lured to the event by the opportunity to claim the super grand prize of a Mr. Heater. These days, the prize list represents more than \$225,000 in assorted items such as Ice Castles, four-wheelers, a Polaris Ranger, clam shacks, \$8,000 worth of outdoor gear from Scheel's and Runnings, and more.

Anglers can keep their spot in the field if they register early in mid-July, otherwise their spot will be thrown into a lottery. Three guaranteed positions are drawn each year for those who participate in the town's summer fishing tournament, the Annual Denny Palmer Memorial Walleye Classic. Three spots are auctioned off on Ebay, which typically fetch up to \$4,000 apiece, while a

final spot is raffled off.

Last year's winners were Travis Bergstrom and Tate Merchant, who registered four fish weighing a total of 15.8 lbs. including one lunker that tipped the scales at 9.33 lbs. Jason Converse and Josh Spilde finished second with five fish weighing in at 13.4 lbs.

Dargatz already has the July 2023 registration date on his calendar and reminder notifications set to make sure he doesn't miss out. He's anticipating another adventurous outing in this year's tourney.

"I think it's great for the town to have so many people visiting and spending money. It's pretty wild that a small town can pull something like that together. They run it like a well-oiled machine and make sure everyone has a good time."

Interested in solar? Let's talk!



Brian Jeremiason
Manager of Marketing
& External Relations

Lyon-Lincoln Electric Cooperative is committed to helping our members find affordable, reliable and safe energy options. We make solar simple, helping you evaluate the risks and benefits of rooftop solar and finding a solution that is right for you.

Question and Answer

Is rooftop solar a good option for me?

Maybe

Whether and how much you will benefit from a residential solar array depends on ...

- how much you pay for electricity
- how much electricity you use
- your roof
- state and local incentives for solar development
- your rooftop solar provider

Is my house suitable for a rooftop solar array?

Maybe

- Does your roof face south or west and is it shaded?
- Will you need to replace your roof sometime during the life of the panels? If so, you should replace your roof first.
- Have you explored all of your energy efficiency options? (It doesn't make sense to purchase more solar than you need!) We can help you reduce your energy use and right-size your array.
- Does your community have restrictions?

Can I still get the benefits of renewable energy if I don't live in a house or if my house isn't suitable?

Yes!

- At Lyon-Lincoln, we have worked with our power supplier, East River Electric and developed a program to offer Renewable Energy Credits to anyone who wants to participate.
- RECs are also called Green Tags and they represent the valuable renewable attributes of wind energy.

Question and Answer

Will solar panels provide electricity in the event of an outage?

No

- Without a battery system and a "smart inverter," most rooftop arrays do not provide power during outages.

What should I know before I sign a contract?

If you are purchasing a rooftop solar array, be sure to ask...

- What is the total installed (turnkey) cost of the system?
- What is the payback period? What are the assumptions underlying that estimate?
- Will I need to finance the array?
 - Who gets the tax credits (the "renewable energy credit")?
 - Will I receive "free" electricity once panels are paid for?
 - Does the company offer warranties on panels AND inverters?
 - What are the details of the service contract?

If you are leasing panels in a rooftop solar array, be sure to ask...

- What is the upfront cost of the system?
- Are there other customers in the vicinity with comparable systems? How much electricity are their systems producing?
- Who gets the tax benefit (the "renewable energy credit")?
- Can the lease be transferred if I sell the house?
- Does the lease company have the right to run a credit check?

As a consumer, how can I protect myself and my investment?

Research

When you make the decision to invest in residential solar, you are making a significant financial investment. Be sure to do your research on the company.

- Are the installers North American Board of Certified Energy Practitioners (NABCEP) Solar Photovoltaic (PV) Electric trained and certified?
- When was your company established and how much solar has it installed to date?
- Can your company provide a list of the projects and references for them?
- Are you accredited with the Better Business Bureau? If so, what is your rating?

Have more questions?

Contact Us

Phone: 507-247-5505
Email: email@llec.coop
visit our website:
www.llec.coop & click on the Distributed Energy link under the Your Energy tab.

YEAR-TO-DATE COMPARISON

	Sept.- 2021	Sept.- 2022
Total Revenue	\$7,658,126	\$7,950,219
Cost of Power	\$4,449,107	\$4,376,967
Operating Expenses	\$3,236,612	\$3,348,756
Operating Margins	\$(27,593)	\$224,496
KWH's Purchased	70,364,578	73,685,943
Services in Place	4,132	4,122
Miles of Line	1,670	1,671
Revenue per Mile	\$4,586	\$4,758

WINTER OUTDOOR FUN

The chill of winter doesn't keep outdoors enthusiasts from finding adventure at Farm Island Recreation Area. *Photos by Travel South Dakota*

Winter adventure-seekers find wonder in the chilly outdoors

Billy Gibson

billy.gibson@sdrea.coop

Mental health counselors have discovered that seasonal affective disorder can be much more than just a harmless case of the blahs - it's a real condition that afflicts millions of people when the daylight diminishes and the temps turn colder.

They also agree that one way to defend against the winter doldrums is to get out of the house, embrace the crisp invigorating air and enjoy all the season has to offer.

It doesn't take much time or effort to create a list of fun things to do to get the blood pumping and the spirit soaring. Stepping away from a stuffy den and going outside to build a snowman, hike a nature trail, roast marshmallows over a bonfire and engage in other activities with family and friends can help bring back some

mental and emotional balance.

Nick Harrington of South Dakota Game, Fish and Parks said his department is eager to accommodate anyone looking to extract some fun from the chill of winter.

Harrington notes that many of the state's 50-plus public camping and recreation areas are open for attendance during the long winter months, although some facilities are closed in an effort to protect delicate nesting habitats

for eagles and other species of wildlife.

Some comfort stations may close down during winter but the state has modern lodges available with amenities such as heaters and running water, including cabins, suites and group lodges for cold-weather outdoor vacationing.

Harrington said that while many vacationers from far and wide flock to South Dakota in the summertime, the state boasts more than 1,500 miles of nature trails for cold-weather adventurers to discover and is one



Fat-tire biking in Spearfish Canyon

8 WINTER WONDERLANDS FOR OUTDOOR ADVENTURE

- ❄ Wind Cave National Park,
Hot Springs
- ❄ Snake Creek Recreation
Area, Platte
- ❄ Palisades State Park,
Garretson
- ❄ Custer State Park Spur,
Custer
- ❄ Randall Creek SRA,
Pickstown
- ❄ Pelican Lake,
Pelican Township
- ❄ Farm Island SRA,
Pierre
- ❄ Oakwood Lakes State Park,
Bruce



Time spent outdoors during the winter can be beneficial to mental and physical well-being.

of the nation's top attractions for snowmobiling, snowshoeing, hiking, fat-tire biking and many other off-season outdoor adventures.

"Some people just enjoy getting out in the cold weather. They like the changing of the seasons we get in our region and they're always looking for new opportunities to explore what we have to offer without a lot of crowds," Harrington said. "It's already a beautiful state, but winter really changes the look of the landscape and is a big draw for many people looking for outdoor fun."

World-renowned summertime attractions such as the iconic Mount Rushmore and Crazy Horse destinations take on an entirely different appeal during the snowy season. The Badlands geological formations, Ponderosa pine forests, open prairies, secluded lakes and

scenic waterways become even more alluring for landscape photographers, bird-watchers, hikers and wildlife enthusiasts when set against a charming and aesthetically pleasing wintry backdrop.

One of the most highly-attended state park destinations during both the summer and winter is Custer State Park with its 71,000 acres of trails, spectacular vistas and pristine lakes. The site is open year-round and during winter offers a wide array of things to see and do.

But there is still lots to explore across the state, including the more centrally situated Farm Island Recreation Area located four miles east of Pierre. Considered one of the park system's best-kept secrets, Farm Island sits nestled along the banks of Lake Sharpe

and the Missouri River and welcomes many winter guests who enjoy majestic glowing sunsets, ice fishing, eight miles of hiking trails, cross-country skiing and exploring the perfect natural habitat for birdwatching. There's also RV, primitive and cabin camping opportunities available.

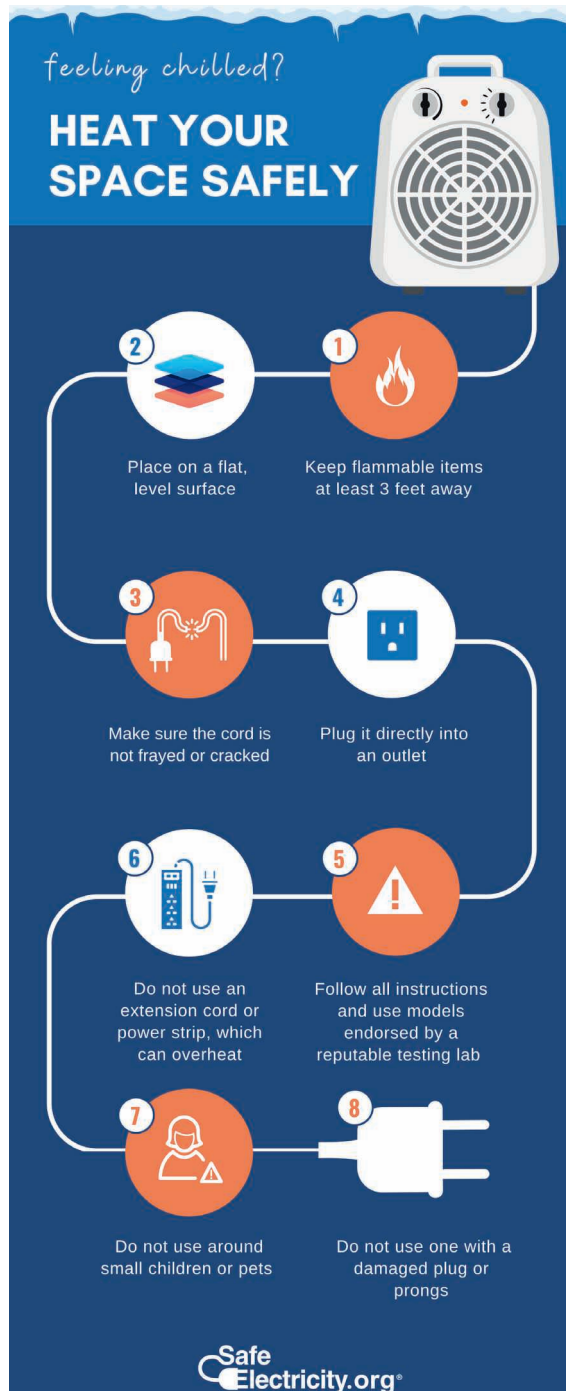
For more ideas on how to plan trip and shake off the winter blues, check out this handy guide: www.travelsouthdakota.com/winter.

And after deciding on your winter vacation plans, don't forget to pack the following along with the rest of your cold-weather gear:

- Wool base layer
- Fleece mid-layer
- Windproof outer layer
- Waterproof boots
- Warm hat, scarf, gloves and socks.

Time to ditch your old space heater?


If you can't remember when you purchased your space heater, it might be time to replace it. Just like the flip phones of yesteryear have progressed into today's modern cell phone, portable space heaters have come a long way too. Camille Snobl- 1347800. Most of today's models have built-in safety features, such as non-exposed coils and sensors that detect overheating or touch, as well as an automatic shut-off feature in case it gets tipped over.



Regardless of whether your space heater is fresh out of the box or several years old, it should be used safely, since most home heating fire deaths (86%) involve using one, according to the National Fire Protection Association (NFPA). In fact, heating equipment is the second-leading cause of U.S. home fires, right behind cooking.

Along with using a unit that is in good working order, be sure to keep clothing, papers, rugs and other flammable items at least 3 feet away from a space heater. More than half of the heating-related home fires start when items are too close to the heat source, according to the NFPA, including upholstered furniture, clothing, a mattress or bedding.

Safe Electricity & Lyon-Lincoln Electric also recommend these additional space heater safety tips:

- 
- ❗ Read all instructions and only use as recommended.
 - ❗ Do not leave a space heater unattended.
 - ❗ Plug it directly into an outlet; most power strips and extension cords are not equipped to handle the energy spikes caused by a space heater cycling on and off.
 - ❗ Unplug any other item from the outlet you are using; also try to use a dedicated circuit to avoid overload.
 - ❗ Keep children and pets away from space heaters.
 - ❗ Turn them off before you leave the room or go to sleep.
 - ❗ Do not use a heater in disrepair or with a frayed cord or damaged plug.
 - ❗ Place them on flat, level surfaces and never place on furniture, counters or carpet, which can overheat.

AQUICK GUIDE TO GENERATORS

With proper use and maintenance, generators provide great convenience during a power outage. Before you purchase a generator, determine your backup power needs to select the right size. Make a list of essential appliances and devices you'll want to power during an outage, then total the required wattage.



RECOMENDED IF YOU...

...**RARELY**
LOSE POWER

Recreational Inverter

Up to 2,000 watts

Lightweight, about 60 pounds

Quiet, easy to store

Power: fridge and a few smaller items (i.e. lamp, phone charger, and a home security system)

Midsized Inverter

Up to 3,500 watts

Weighs up to 150 pounds

Power: fridge, laptop, 5 to 10 lights, phone charger, home security system, and 10K BTU air conditioner

...**OCCASIONALLY**
LOSE POWER

*Transfer switch required

Portable Generators & Large Inverters

Up to 7,500 watts

Weighs about 300 pounds

Power: fridge, gas furnace, 10KBTU air conditioner, dishwasher, multiple lights, TV, laptop, and more

Ability to connect to home's breaker panel

...**FREQUENTLY**
LOSE POWER

*Transfer switch required

Home Standby

Up to 20,000 watts

Must be permanently installed; starts automatically during an outage

Power: nearly all home appliances and electronics (simultaneously)

Can run indefinitely on natural gas or propane

Recommended if you frequently lose power

SAFETY FIRST!

- Let us at Lyon-Lincoln Electric know if you purchase a generator that you plan to connect to an electric panel.
- Improperly installed generators can create back feed, which is dangerous to our crew and the community.
- Before using a generator, disconnect the normal source of power coming into your home/business.
- Never operate a generator indoors or in an enclosed space.

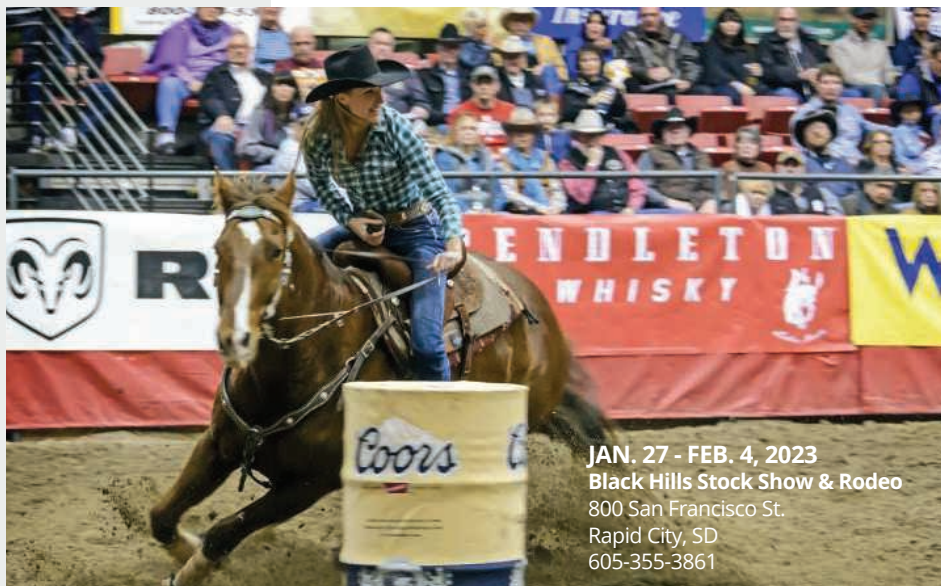
Disclaimer: Please note safety requirements may differ based on the type of generator you purchase. Thoroughly read the operator's manual and know how to shut off the generator quickly.

Source: Consumer Reports

REGISTER TO WIN!

Bring this coupon and mailing label to the Touchstone Energy® Cooperatives booth in LaCroix Hall at the Black Hills Stock Show to win an electric snow blower!

Your Phone Number: _____
Your E-mail Address: _____



JAN. 27 - FEB. 4, 2023
Black Hills Stock Show & Rodeo
800 San Francisco St.
Rapid City, SD
605-355-3861

To have your event listed on this page, send complete information, including date, event, place and contact to your local electric cooperative. Include your name, address and daytime telephone number. Information must be submitted at least eight weeks prior to your event. Please call ahead to confirm date, time and location of event.

JAN. 1
American Legion Post 15
Pancake Breakfast
8:30 a.m.-12 p.m.
South Dakota Military Heritage
Alliance Building
1600 W. Russell St.
Sioux Falls, SD

JAN. 13-14
ON YOUR FEET! THE MUSICAL
Show Dates:
Jan. 13, 7:30 p.m.
Jan. 14, 2 p.m.
Jan. 14, 7:30 p.m.
Washington Pavilion
Sioux Falls, SD

JAN. 14
Coats for Kids Bowling
Tournament
Registration Starts at 1 p.m.
\$80 for a four-person team
Meadowood Lanes
Rapid City, SD
605-393-2081

JAN. 14
Chinook Days
Winter Carnival
10 a.m.-2 p.m.
Big Hill
Spearfish, SD

JAN. 20
Rapid Valley UMC
Soup Supper
4:30 p.m.-7 p.m.
Rapid City, SD

JAN. 21
Lakota Games on Ice
1 p.m.-4 p.m.
Mitchell Prehistoric Indian Village
Mitchell, SD

JAN. 27-28
Annual Deadwood Pro
Snocross Races
Jan. 27, 12:50 p.m.
Jan. 28, 8:25 a.m.
Days of '76 Rodeo Grounds
Deadwood, SD

JAN. 27 - FEB. 4
Annual Black Hills Stock
Show & Rodeo
Central States Fairgrounds and
The Monument
Tickets may be purchased
online and at the gate
Rapid City, SD
605-355-3861

JAN. 28
K9 Keg Pull
On-site registration
10:30 a.m.-12:30 p.m.
Deadwood Street by
Outlaw Square
Deadwood, SD

FEB. 3-4
TOOTSIE
Show Dates:
Feb. 3, 7:30 p.m.
Feb. 4, 2 p.m.
Feb. 4, 7:30 p.m.
Washington Pavilion
Sioux Falls, SD

FEB. 10-11
Mardi Gras Weekend
Mardi Gras Events & Parade
sponsored by Deadwood
Chamber of Commerce
Main Street
Deadwood, SD

FEB. 11
Songs of Romance
7:30 p.m.
Washington Pavilion
Sioux Falls, SD

MAR. 4
Annual Ag Day
9 a.m.-1 p.m.
Washington Pavilion
Sioux Falls, SD

**Note: Please make sure
to call ahead to verify the
event is still being held.**