

COOPERATIVE CONNECTIONS



South Dakota Art

**Trashyard
Treasures**

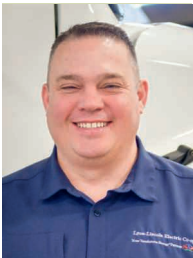
Pages 8-9

**The Story of
Dude Dad**

Pages 12-13

New year - New opportunities for our members

The new year brings new opportunities, and your cooperative is looking for members that would like to become director candidates. The board has appointed the nominating committee and has representatives from each of the districts. The following individuals were appointed:



Tim O'Leary
General Manager

District 1 - Gary Heffele, Deb Rouge and Jim Johansen; District 2 - Steve Schouville, Mark Meulebroeck and Ken Schiller and in District 3 - Terry Blanchette, Bonnie Merritt and Jared Lipinski.

The committee will be meeting in February to find candidates for this year's election of directors. A list of nominated candidates will be posted by March 8th. If you are interested in becoming a candidate or learning more about the responsibilities of being a director, please give the office a call and we can visit about your questions.

The membership will be electing one director in each district for a three-year term and one director in District 2 for a one-year term. The one-year term is due to Sandy Ludeman resigning his board position as of February 25, 2023. Sandy and Peggy will be moving off the Lyon-Lincoln system and he will no longer be eligible to serve on the cooperative board. We will have a longer article in next month's newsletter thanking Sandy for his 10.5 years of service on the board of directors.

Another aspect of the nomination process is the petition process. The petition process allows for members to take a petition, signed by 10 other members in the district, to their district meeting. Once the candidates are nominated or take out a petition, members will vote to narrow the candidate list to two per district. The final two candidates will appear on the election ballot at the annual meeting on Wed., June 7th.

This year's district meetings will be held on the following dates and time.

**District 1 – Monday, April 10th
at 7:00 pm – Tyler – Lyon-Lincoln
Electric Headquarters**

**District 2 – Tuesday, April 11th
at 7:00 pm – Russell – Russell
Community Center**

**District 3 – Thursday, April 13th
at 7:00 pm – Porter – Bethal
Lutheran Church**

In addition to narrowing the director candidate list to two, staff will be giving an update on cooperative business activities over the last year and plans for 2023.

The Board heard the results of the latest Cost of Service and Revenue Requirements Study at the board meeting in January. The study was completed by staff at the National Rural Utilities Cooperative Finance Corporation (CFC) and it looked at our current costs, rates and any changes that may need to be made to our electric rates. The study indicated that the cooperative should look at implementing a 3% increase in rates in the near future to maintain the necessary revenues to meet our lender's borrowing requirements.

As I mentioned last month, we will not be making any changes in rates for 2023 at this time. The main reason that we can hold off on any increase at this time is our approved revenue deferral plan. The plan allows the cooperative to maintain rate stabilization and power cost changes in the near term which will allow us additional time to look at rates during upcoming budget discussions.

We will discuss the study, continuing supply chain issues, increasing costs and legislative impacts coming out of St. Paul during the district meetings. Please mark your calendars and join us to learn more about these and other issues impacting your local electric cooperative.

COOPERATIVE CONNECTIONS

LYON-LINCOLN ELECTRIC

(ISSN 1540-6989)

Board of Directors

Sandy Ludeman, Tracy – President
Dale Fier, Taunton – Vice President
Kathleen Schreurs, Tyler – Sec./Treas.
Jared Dritz, Porter
Galen Grant, Russell
Mary Gunnink, Lake Benton
Scott Johnson, Tyler
Mike Longtin, Taunton
James Rokeh, Minneota

Staff and Personnel

Tim O'Leary – General Manager
Lyle Lamote – Line Superintendent
Kristi Jensen – Finance Manager
Brian Jeremiason – Manager of
Marketing & External Relations
Rochelle Borresen – Accountant
Lisa Hauswedell – Billing Clerk
Jessica Gums – Executive Assistant

Staff and Personnel

Journeyman Linemen:
Ross Birath
Dan Tutt
Tyler Blomme
Tyler Sand
Nathan Pavek
Trent Skjefte – Apprentice Lineman
Sam Rohde – Apprentice Lineman
Wade Thooft – Operations Staff
Assistant
Alan Fischer – Warehouse
Coordinator/Work Order Clerk

www.llec.coop

Lyon-Lincoln Electric hours are:
8:00 AM – 4:30 PM, Mon. thru Fri.

LYON-LINCOLN ELECTRIC COOPERATIVE CONNECTIONS is published monthly by Lyon-Lincoln Electric Cooperative, 205 W. Hwy. 14, PO Box 639, Tyler, MN 56178. Electric co-op members devote 50 cents from their monthly electric payments for a subscription. Non-member subscriptions are available for \$12 annually. Periodicals Postage Paid at Tyler Post Office, Tyler, MN 56178 and at additional mailing offices.

POSTMASTER: Send address changes to: Lyon-Lincoln Electric Cooperative Connections, PO Box 639, Tyler, MN 56178; Telephone (507) 247-5505; Toll Free 1-800-927-6276; Fax (507) 247-5508.

Jessica Gums, Editor

SOLAR POWER

Stepping Towards Solar

Is it right for
my home?

Consider All of the Costs

- ☐ Cost to purchase solar equipment
- ☐ Cost of installation
- ☐ Financing charges
- ☐ Additional insurance costs
- ☐ Solar equipment maintenance cost
- ☐ Loss of discount rates heat/AC

Consider These Before Purchasing

- ☐ LLEC Net Metering Policy
- ☐ Solar power is dependent on weather
- ☐ Do you have enough space for solar panels
- ☐ check with your insurance provider before construction
- ☐ Pick contractors with solar experience
- ☐ Review all contracts to insure all costs are included
- ☐ Request multiple bids from contractors and compare

Before Installing & Connecting

- ☐ Complete and submit a copy of the standard interconnection agreement
- ☐ Contact LLEC to schedule a site visit to commission the installation. Ensure array is tested and operational before LLEC arrives.



Single Phase General Service Access Charge

\$40.00

LLEC monthly access charge still applies even if no electricity is purchased

Potential Benefits

- ✓ Monthly Bill Reduction
- ✓ Improve Home Resale Value
- ✓ Generate Your Own Power
- ✓ Reduce Your Carbon Footprint

30%

Federal Tax Credit Until 2034



1-800-927-6276



email@llec.coop

Spring Planting Safety

Farming equipment has become more massive and technologically advanced over time. While these welcome improvements help farmers cover more ground in less time, taller equipment and longer extensions can bring added challenges around power lines.

As farmers prepare to enter the fields for planting, we urge everyone working in the agricultural field to be alert to the dangers of working near overhead power lines, poles and other electrical equipment.



Follow the 10-foot distance rule

To stay safe around overhead power lines, follow safe work practices at all times to help prevent serious and even deadly accidents. Start by making sure everyone knows to maintain a minimum 10-foot clearance from power lines.

This 10-foot rule applies not only to the area underneath the power line, but to the full 360 degrees around it. Not only can electricity change paths if direct contact is made, it can also happen when someone or something gets too close to a power line, and the current jumps, also known as arcing.

Other precautions

In addition to the 10-foot rule, take these steps to help decrease the chances of an electrical-related incident:

- If your machinery or vehicle comes in contact with a power line, do not get out of the cab because you could be electrocuted. Instead, stay where you are and call 9-1-1 to dispatch the appropriate utility to deenergize the power.
- If it is not safe to stay in the cab due to fire or smoke, make

a solid, clean jump with both feet landing at the same time. Hop away with feet together as far as you can.

- If you come across an accident or incident near a downed power line, alert individuals (from at least 50 feet away) to stay in the cab or vehicle as long as there is no imminent danger. Call 9-1-1 and do not approach the scene.
- Have a daily meeting with staff to go over possible hazards. Map out and review routes where equipment will be moved and ensure it will clear power lines.
- Teach anyone working with or for you (including family members and seasonal employees) about power line awareness and proper clearance distance.
- When working around power lines, always use a spotter, who has a broader vantage point than the person in the cab.
- Visually inspect overhead lines, which may not meet height codes due to age or pole damage. If a wire is hanging low, never try to move it; instead, contact your electric utility for assistance.
- Lower extensions to the lowest setting when moving loads.



Take care when plugging in appliances

Stella Nilson

Stella Nilson gives good advice on circuit safety. Overloading circuits is a major cause of residential fires, and she warns people to take care when plugging in appliances. Stella is the daughter of Kyle and Alision Nilson, members of Moreau-Grand Electric based in Timber Lake.

Kids, send your drawing with an electrical safety tip to your local electric cooperative (address found on Page 3). If your poster is published, you'll receive a prize. All entries must include your name, age, mailing address and the names of your parents. Colored drawings are encouraged.



SEAFOOD SPECIALTY

SEAFOOD PARTY DIP**Ingredients:**

1 pkg. mock crab sticks
 1 pkg. mock crab pieces
 1 pkg. mock lobster
 1 pkg. salad shrimp
 1 can water chestnuts
 1 medium onion (optional)
 1 c. real mayonnaise
 2 pkg. Philly cream cheese
 Dried parsley, garlic powder, salt, and pepper to taste

METHOD

Grind crab, lobster, shrimp, and water chestnuts. Chop onion. Using a mixer, blend mayo and cream cheese until smooth. Add parsley, garlic powder, salt, and pepper to taste. Combine with seafood. Mix well and refrigerate. Serve with various kinds of crackers.

Kari Larson Reder, Warner, S.D.

WALLEYE CAKES**Ingredients:**

8 oz. walleye (cooked, cooled, and flaked)
 1 1/2 c. mayonnaise
 4 eggs
 1 c. cooked wild rice
 1/2 c. Parmesan cheese
 4 green onions (chopped)
 1 sleeve saltine crackers (crushed)
 1 tsp. crushed garlic
 2 tsps. seasonings (salt, pepper)
 2 tbsp. oil or butter

METHOD

In large bowl, combine walleye, mayo, rice, onion, garlic, and cheese. Add eggs and seasonings. Fold in crushed saltines until the mixture is firm enough to form cakes. Fry in olive oil for 2-3 minutes on each side or until crispy. Serve with topping: 1/2 c. mayo, 1 tsp. garlic powder, and 1 oz. crumbled blue cheese. Mix together.

Dar Duncan, Milbank, S.D.

SHRIMP PASTA**Ingredients:**

1 can (14 1/2 oz.) diced tomatoes, undrained
 1 can (6 oz.) tomato paste
 1 c. water
 2 tsps. sugar
 1 tsp. basil leaves
 1 tsp. garlic powder
 1 tsp. oregano leaves
 1/2 teaspoon salt
 1/4 tsp. crushed red pepper
 8 oz. pasta, such as linguine or spaghetti
 1 lb. medium shrimp, peeled and deveined

METHOD

Mix tomatoes, tomato paste, water, sugar, basil, garlic powder, oregano, salt and red pepper in large saucepan. Bring to boil on medium-high heat. Reduce heat to low; simmer, uncovered, 20 minutes, stirring occasionally. Meanwhile, cook pasta as directed on package, adding shrimp during last 3 minutes of cooking. Drain. Return pasta and shrimp to saucepot. Pour tomato sauce over shrimp and pasta. Toss gently to coat well. Serve immediately with shredded Parmesan cheese, if desired.

mccormick.com

Please send your favorite recipes to your local electric cooperative (address found on Page 3). Each recipe printed will be entered into a drawing for a prize in December 2023. All entries must include your name, mailing address, phone number and cooperative name.

December Board Meeting Minutes

The regular monthly meeting of the Board of Directors of Lyon-Lincoln Electric Cooperative was held on Monday, December 19, 2022. Directors present were James Rokeh, Kathy Schreurs, Jared Dritz, Galen Grant, Scott Johnson, Mary Gunnink, Sandy Ludeman, Dale Fier, and Mike Longtin. Also present at the meeting were General Manager, Timothy O'Leary, Finance Manager, Kristi Jensen, and Attorney, Michael W. Cable.

The Board and others in attendance stood and gave the Pledge of Allegiance. President Ludeman then called the meeting to order and routine business was conducted including approval of the November 28, 2022 meeting minutes, a review of the check schedule, applications for memberships, and shares to be cancelled.

Kristi Jensen, Finance Manager, gave the Financial and Statistical Report for the period ending October 31, 2022. Ms. Jensen then reviewed with the Board a Data Sheet showing the Basin Capital Credit Retirement to Lyon-Lincoln Electric Cooperative, Inc. in the amount of \$170,678.73. Jensen advised the Board that said amount was invested at Basin in the Member Investment Program at 4.75% interest rate until returned to the member-owners of Lyon-Lincoln. Also reviewed with the board was Lyon-Lincoln's Construction Work Plan

and how it related to the RUS loan application that had been completed.

There was discussion concerning Lyon-Lincoln Electric Cooperative, Inc.'s Annual Meeting and whether or not to have in person voting at the Annual Meeting or mail in ballots and after discussion a motion was made by Mr. Rokeh, seconded by Mr. Johnson, and carried to have in person voting by the membership at the Annual Meeting of Lyon-Lincoln Electric Cooperative, Inc. Wayne & Sheri Hesse - 315403. The Board reviewed the 2023 Budget with General Manager, Timothy O'Leary, and after review, a motion was made by Mr. Fier, seconded by Mr. Dritz, and carried to approve the 2023 Budget.

Lyle Lamote, Line Superintendent, advised the Board on outages for the month of November, 2022. He also reviewed with the Board the November Safety Report and indicated that Terry Ehli, MREA Safety Instructor, presented the topic of Hearing Conservation at the November 15, 2022 safety meeting. Mr. Lamote also advised the Board of the effects of the storm on December 14, 2022 and thereafter with approximately 70 poles lost north of Lake Benton. Mr. Lamote indicated that the line-men were continuing to set poles as allowed by weather, repairing storm damage, and will commence cutting and trimming trees.

Brian Jeremiason, Manager of Marketing and External Relations, reviewed with the board his report as follows: Provided information on a Social Media update which described items such as impressions, reach and engagement, two new solar project applications submitted by Wolf River, and advised the Board the F150 Lightning ordered by the Cooperative had received a production order no., but there was no timeframe as to when the pickup will be delivered.

General Manager Timothy O'Leary then gave his manager's report; some of the items reviewed were as follows: The Board reviewed the November power bill and sales to members and compared those figures to budgeted amounts, looked at line loss for the system, and reported on East River's MAC meeting that he attended. Mr. O'Leary then reviewed with the board upcoming meetings, events, and notices.

The Board then reviewed the November Cyber Security Program Report and directors reported on training sessions and meetings attended and reviewed and discussed upcoming meetings and educational workshops to be held.

With there being no further business to come before the board, a motion was made and carried to adjourn at 1:20 o'clock P.M.



KEEP KIDS SAFE AROUND

Trees and Power Lines

When kids take a break from gaming or other devices, they may head outdoors to play. If they will be climbing trees, scope out the area first to ensure that the treetops do not have power lines running through them.

Not realizing power lines are energized, children may reach up to grab a line or accidentally come too close to it when they are playing or sitting high up in a tree.

Even if the power lines are not touching the tree, contact could happen once weight is added to the branch.



In addition, teach kids to fly kites, drones and remote control planes or toys in open areas free from power lines.

If a toy or other object lands in a substation, please call your electric utility to retrieve the item. Never approach the fence or try to enter the area.

Take time to teach children and teens how to respect and identify potential electrical hazards.

Learn more at SafeElectricity.org



Updated notice to co-generators

In compliance with Lyon-Lincoln Electric Cooperative's adopted rules relating to co-generation and small power production, Lyon-Lincoln Electric Cooperative is obligated to interconnect with and purchase electricity from co-generators and small power producers, whom satisfy the conditions as a qualifying facility. Lyon-Lincoln Electric Cooperative, Inc. is obligated to provide information free of charge to all interested members upon request regarding rates and interconnection requirements. All interconnections require an application and approval to become a qualifying facility. Any dispute over interconnections, sales, and purchases are subject to resolution by the Lyon-Lincoln Electric Cooperative Board. Interested members should contact Lyon-Lincoln Electric, PO Box 639, Tyler, MN 56178 or call 507-247-5505.

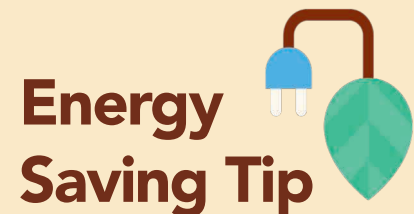


Win Money

Find Your Name & Member Number and Win \$

The tradition of listing member names and numbers in the newsletter continues in the Cooperative Connections. If you find your name and member number, call the office and let us know and you will receive a \$20 energy credit.

In last month's Cooperative Connections, Douglas Groenhoff & Ronald Skorczewski spotted their names and will receive an energy credit. Once again, there are two new names and numbers hidden in this issue. Good Luck!



Washing windows and screens is a great way to practice energy efficiency during spring cleaning. Clean windows and screens make your home brighter by allowing more sunlight in, reducing the need for lamps and fixtures. Clean screens also allow more fresh air in the home when the windows are open to recycle indoor air. Natural light and clean air are energy savers, and they enhance overall health and productivity.

Source: energy.gov

TRASHYARD TREASURES

Lee Lindsley of Piedmont turns trash into treasure when he isn't on the clock working for the South Dakota Department of Transportation.

South Dakota Man Welds Junkyard Scraps Into Pieces of Art

Frank Turner

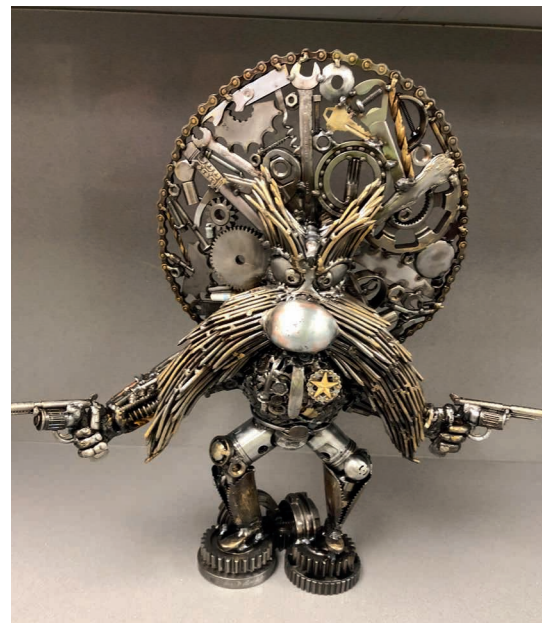
frank.turner@sdrea.coop

Lee Lindsley has a real talent for welding trash into treasure. Given the time, Lindsley can sculpt even the most unwanted junkyard scrap – busted gears, rusted lug nuts and mangled bicycle chains – into an artistic masterpiece.

By day, Lindsley works as a region inspector for the South Dakota Department of Transportation in the Black Hills, but by night, he can be found in his shop putting hours of work into his metallic puzzles, welding them together piece by piece.

When not on the clock, Lindsley is busy tackling his next project, investing anywhere from 30 to 100 hours into each sculpture. The end result often portrays a snapshot of rural life in the Black Hills: a life-size hunting dog made from a mix of old tools and spent rifle rounds, a miniature snowmobile standing on a displaced piston and a gun-slinging Yosemite Sam with a beard fashioned from old nails.

“Metal sculpting is some-



Famous cartoon character Yosemite Sam is one of Lindsley's favorite metal creations.

thing that anyone can do if they put their mind to it,” said Lindsley. “All I do is throw parts of junk together.”

In many ways, Lindsley’s passion for sculpting and welding echoes the resourcefulness of the very artwork he makes. When Lindsley began his metal sculpting journey, he didn’t have a formal education or even a background in art to guide him. Instead, he relied on his welding skills and the bits of scrap he had available to make his remarkable artwork.

“It’s hard to put a price on these pieces, but if my artwork does sell, I want to donate a portion of the sale to a charity.”

It was Lindsley’s second cousin Chris Degen, a teacher at Mitchell Technical College, who inspired Lindsley’s first foray into metal sculpting four years ago. Degen recalls gifting Lindsley’s son, a former lineman, a simple lineman made from nuts and bolts during the holidays. The quirky Christmas gift became a catalyst for the two to start creating new projects and bouncing new ideas off each other. According to Degen, Lindsley just ran away with the idea.

“He went crazy with it,” Degen laughed. “Lee started making sculptures that went way above and beyond what I was doing. I would put an hour into my project, and he would put one hundred into his.”

Taking another step forward in his hobby, Lindsley began researching works and art pieces posted online by world-famous metal sculptors, including metal sculptors John Lopez – a South Dakotan – and Brian Mock, whose masterpieces provided Lindsley a roadmap of what can be accomplished.

Since embarking on his metal sculpting journey, Lindsley has completed more than 18 metal sculptures, and his hobby continues to blossom. For the first time ever, Lindsley put one of his sculptures

up for sale in A1 Al’s Pheasant Ranch in Emery S.D. Since November, Lindsley’s metal hunting dog has stood proudly in one of the ranch’s hunting cabins, waiting for a buyer, and although the dog hasn’t left the shelf just yet, Lindsley said he is

excited to see his work out in the open and visible to the public eye.

“It’s hard to put a price on these pieces, but if my artwork does sell, I want to donate a portion of the sale to a charity,” he said. “We will see what happens.”



Lindsley’s metal German shepherd sits proudly in his workshop.



**STAY
SAFE
THIS
WINTER**

This time of year can be downright dangerous.

If you're in a car accident involving a power line, stay in your vehicle and call 911.

Wait until electric utility personnel de-energize the line. Report any downed lines or damaged equipment to your local Touchstone Energy Cooperative.

Your local Touchstone Energy® Cooperative wants you to be safe. For more safety tips, visit **YourCoopPower.com**.



**RE-ENERGIZING
SAFETY**

BOARD OF DIRECTORS

Lyon-Lincoln Electric Cooperative: Board of Directors

Lyon-Lincoln Electric Cooperative's Board of Directors is made up of nine members from three districts. Each director serves a three-year term, after which they can run for re-election. Directors must live in the district that they represent. George Lyall- 1360301. The Director terms are staggered so that each year a board member from each district is up for election. Members vote for one director from each district. If you would like more information pertaining to director position by-laws, turn to page 14 in this issue.

Lyon-Lincoln Electric Cooperative is unique in that its board of directors is made up of local citizens who are also members. The policies and rates set by the Board of Directors are made in the best interests of the membership, not individuals in another state. Lyon-Lincoln's directors are typically people you may run into at a community or school event. If you have questions about the cooperative's operations, you can simply pick up the phone and call Lyon-Lincoln at 1-800-927-6276 or contact your local director representative.

Who represents you?

District 1-

Includes all members whose residence, farmstead or place of business is located in Ash Lake, Lake Stay, Drammen, Diamond Lake, Marshfield, Verdi, Lake Benton, and Hope townships and in the City of Arco in Lincoln County. Also included in District 1 are the townships of Coon Creek, Shelburne, and Rock Lake townships in Lyon County, Altona, Fountain Prairie, and Aetna townships of Pipestone County, and Ellsborough and Skandia townships in Murray County.

Board Members currently serving from District 1 include:
Mary Gunnink, Scott Johnson, and Kathy Schreurs.

District 2-

Includes all members whose residence, farmstead, or place of business is located in Island Lake, Lynd, Lake Marshall, Clifton, Lyons, Sodus, Amiret, Custer and Monroe townships in Lyon County as well as the Cities of Lynd and Russell.

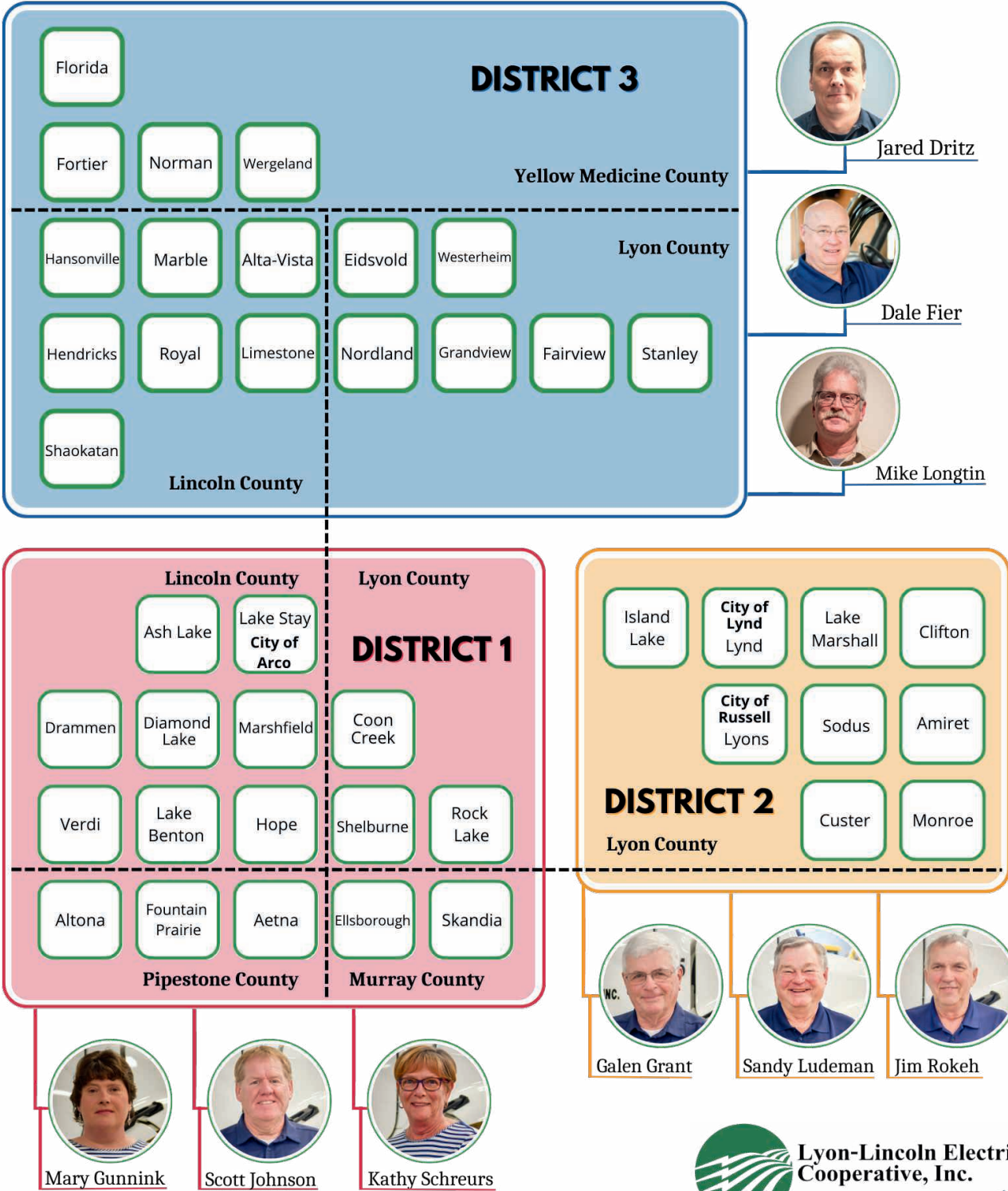
Board Members currently serving from District 2 include:
Galen Grant, Sandy Ludeman, and Jim Rokeh.

District 3-

Includes all members whose residence, farmstead, or place of business is located in Florida, Fortier, Norman and Wergeland townships in Yellow Medicine County. Also included in District 3 are the townships of Hansonville, Marble, Alta Vista, Hendricks, Royal, Limestone and Shaokatan in Lincoln County, and Eidsvold, Westerheim, Nordland, Grandview, Fairview and Stanley townships in Lyon County.

Board Members currently serving from District 3 include:
Jared Dritz, Dale Fier and Mike Longtin.

Director Districts





THE STORY OF DUDE DAD

Taylor and Heidi Calmus play with their kids (Theo, Juno and Otto) on a playset Taylor built. The family will welcome another baby in March.

Howard Grows More Than Corn

Tara Miller

Central Electric Cooperative

His kids may only know him as dad, but Jimmy Kimmel, the entire internet and 7 million followers can't be wrong – Howard native Taylor Calmus has evolved into a new-age celebrity. Better known as Dude Dad, Calmus is an accomplished actor, video producer, digital content creator, author, builder, television show host and comedian. Besides making regular appearances on Jimmy Kimmel Live, Calmus has also shared the screen with home remodeling experts Chip and Joanna Gaines, acclaimed actor Anthony Anderson and several YouTube stars.

Calmus is the son of Larry and Julie Calmus. He grew up west of Howard with siblings Zach and Maggie, and graduated from Howard High School in 2005. He now lives in Fort Collins, CO, but Calmus credits much of his creativity to his rural upbringing.

"Growing up in rural South Dakota was awesome because it forced us to create our own fun. My parents were big advocates of that. They would say, 'Go outside and

find something to do.' It enabled us to be creative," Calmus said.

His mom, Julie, agrees. "We were sticklers. We didn't let them play Nintendo or watch tv all day." Instead, the kids often spent time outside constructing BMX bike ramps, among other things.

Building Strong Connections

Now a dad himself, Calmus enjoys putting his ingenuity and building skills to work for his kids. "Building things with your kids is one of the best ways to bond with them," he said. "I've made carnival rides, backyard bike parks, multiple tree houses, a boat, just so many things. Being a dad gives you permission to imagine the impossible like kids do. It allows me to connect with them."

Calmus and his wife Heidi, who is originally from Fargo, have three children and another baby due in March. Heidi is often the subject of her husband's videos. Calmus puts his acting skills to work, sporting a long brunette wig as he comedically embellishes her life. Luckily, Heidi is a good sport, and they often share reaction videos in which she critiques his performance.

The couple went on tour this year, performing comedy shows as a team in North Dakota, South Dakota and Colorado. Calmus said without his wife, they would not have experienced this level of success. "Heidi believed in me before I did. Without her, Dude Dad wouldn't exist today."

The Evolution of Dude Dad

Success didn't happen overnight, Calmus explained. Early on, he would often pick up work doing set construction for tv shows and movie projects to make ends meet.

"When I moved away, I worked hard to make it in Hollywood as an actor, and I had some success," he said. "Then, when Heidi was pregnant with our second child, it was clear to me that I needed to do something more stable to support a family. That's when we created Dude Dad."

Mastering the Dude Dad brand took a great deal of time and commitment. Calmus constantly brainstormed new ideas for videos that would align with the brand and appeal to viewers. After all, the more views his content generates, the more income he earns from paid advertising on the various platforms.

A humble individual, Calmus doesn't necessarily consider himself famous. He said, "I think my content caught on faster in



Taylor and Heidi perform stand-up comedy as a team. They recently sold out shows in Fargo, Sioux Falls, and Fort Collins.

South Dakota because I have family here.”

But the numbers don't lie. Dude Dad content has more than 1 billion views on Facebook and roughly 150 million views on YouTube. So, his reach is far greater than just the state of South Dakota.

“With TikTok and other apps, there are a billion new creators every year, so it's a challenge all the time,” Calmus said. “Anybody can make videos online now, but not everybody can stand in front of an audience and perform comedy. It's been a fun and rewarding challenge. Now we get to see the people who are connecting with our content.”

Calmus authored a book entitled “A Dude's Guide to Baby Size” to help expectant dads understand their baby's size throughout pregnancy. He shares guy-friendly size comparisons for reference, such as a lug nut, a tape measure, a pound of ground beef and a football.

Giving Back

Because of his success, Calmus has been able to give back in unique ways. In 2019, he partnered with HGTV “Fixer Upper” star Chip Gaines to raise \$1.49 million for St. Jude's Children's Hospital. This partnership led to Calmus's television show, Super Dad, where he helps other dads build custom backyard play areas for their children.

Calmus is also a champion for Horizon Health Foundation's Smiles for Miles program. He helped the non-profit raise more than \$20,000 in a single day to provide free dental care for local kids.

Most recently, Taylor and Heidi performed

a live show in Fort Collins and donated the proceeds to a neighborhood family who sadly lost their father.

“He left behind two little kids who are friends with our kids, and we just wanted to be there for them however we could,” Calmus shared.

Making the Family Proud

Reggie Gassman, Calmus's uncle, is the Manager of Customer Electrical Services at Sioux Valley Energy in eastern South Dakota. He said he's proud of his nephew's accomplishments.

“When the kids were little, Taylor and Zach were already making home movies. His success creating videos doesn't surprise me at all,” Gassman said. “He takes something from normal, everyday life and sees it from a different angle.”

Gassman joked, “I told Taylor acting genes run in the family because I was named best actor in the junior class play. That's like the Emmys of Canova!”

Calmus said both sides of his family – Calmus and Gassman – are naturally funny and talented in different ways. While Gassmans are widely known for their baseball skills, his uncle Kurt (and his mustache) have famously inspired some of Dude Dad's most iconic characters.

He's Still Just Taylor

Despite his growing list of accomplishments, he's still the same guy his family knows and loves.

Calmus's mom Julie shared, “Since he was two years old, Taylor was always entertaining people and goofing around. His older brother Zach is just as clever, so there's always laughter when the family gets together. It's pretty cool he's been able to make a living doing that.”

She said when strangers recognize her son as Dude Dad, she chuckles. “He's still just Taylor to us.”



“Husbands of Target” is a viral video with more than 80 million views that Taylor developed in collaboration with other digital content creators.

LLEC bylaws pertaining to Director positions

BYLAW ARTICLE III. DIRECTORS

SECTION 1. GENERAL POWERS.

The business and affairs of the Cooperative shall be managed by a board of nine (9) directors, which shall exercise all of the powers of the Cooperative except such as are by law or by the articles of incorporation of the Cooperative or by these bylaws conferred upon or reserved to the members.

SECTION 2. TENURE AND QUALIFICATIONS.

a) **TENURE.** At the annual meeting of the members, one director from each of the districts into which the Cooperative is divided shall be elected by ballot by and from the members for a term of three years, or until his successor shall have been elected and shall have qualified.

b) **QUALIFICATIONS.** No member who is a person, joint tenant, trustee of a member trust, or partner of a member partnership shall be eligible to become or remain a director or hold any position of trust in the Cooperative who:

1) is not a bona fide member and resident of the district from which he or she is elected or for which he or she is a candidate; ("bona fide resident" shall be defined as residing at and continuously and materially purchasing electric service at a location within any director district from which the director is elected or for which he or she is a candidate for at least nine (9) months each calendar year);

2) is in any way employed by or substantially financially interested in an enterprise substantially competing with the Cooperative or any Cooperative-affiliated business;

3) within three (3) years was a full-time or part-time employee of the Cooperative or an entity wherein the Cooperative has an ownership interest;

4) does not have the legal capacity to enter into a binding contract;

When membership is held jointly by two natural persons, either one, but not both, may be elected a director, provided, however, that neither one shall be eligible to become or remain a director or to hold a position of trust in the Cooperative unless both shall meet the qualifications herein above set forth.

If a corporation is a member then a duly appointed representative of said corporation can be a director if said representative is a bona fide permanent resident of the district for which he/she meets the qualification requirements listed in this section. A member that is an authorized farm corporation or family farm corporation may select an individual member residing on or actively operating the farm to be eligible for election to the board.

Upon establishment of the fact that a director is holding the office in violation of any of the foregoing provision, the Board of Directors shall remove such director from the office.

Nothing in this Section contained shall or shall be construed to affect in any manner

whatsoever, the validity of any action taken at any meeting of the Board of Directors.

SECTION 3. NOMINATION AND ELECTION OF DIRECTORS.

a) **Nomination at District Meetings.** The Board of Directors shall not less than One Hundred Twenty (120) days before the date of the meeting of the members at which Directors are to be elected, appoint a committee on nomination, which said committee shall consist of not less than three nor more than nine members who shall be selected from the three districts so as to insure equitable representation. No officer or member of the Board of Directors shall be appointed a member of the District Nominating Committee. The nominating committee shall, not less than Ninety (90) days before the meeting of the members at which directors are to be elected, nominate one or more candidates for the Board of Directors from such District, and shall by the time stated prepare and post at the principal office of the Cooperative a list of nominations for the Directors to be chosen from such District. There may be additional names for nominations for the Directors to be chosen from such District presented at the District Meeting by Petition of ten or more members residing in such District.

Not less than Thirty (30) days nor more than Sixty (60) days before any meeting at which directors are to be elected, the board of directors shall call a separate meeting of the members of each district at a suitable place in such district for the purpose of selecting two persons as candidates for director to represent the members located within such district. The notice of such meeting shall be given to each member located in such district as provided in Section 4 of Article II and shall indicate the district to which such member belongs. The notice shall describe the person or persons nominated by the District Nominating Committee as candidates for director to be made at the meeting. Said notice shall indicate that there may be additional names for nomination as candidates for director to be chosen from the District presented at the District Meeting by petition of ten or more members residing in said District but said additional name or names as candidates for director may only be made by said petition. The meeting shall, however, be open for discussion of any other matters pertaining to the business of the Cooperative, regardless of whether or not such matters were listed in the notice of the meeting, and recommendations with respect thereto may be submitted to the board of directors or the entire membership.

The district meeting shall be called to order by a director representing the district or by another designated representative of the board of directors, or in his absence, by any member residing within the district. The members shall then proceed to elect a chairman, who shall be someone other than a director, and who shall appoint a secretary to act for the duration of the meeting. Ten (10) members residing in the district present at such duly called district meeting shall constitute a quorum. Members of other districts present at the

meeting may be heard but shall have no vote. The candidates for director nominated by the committee and by petition shall be nominated at the meeting. Candidates must be members residing in the district and must possess the qualifications for director specified in Section 2 of Article III of these Bylaws.

Voting shall be by ballot and proxy voting shall not be permitted at any district meeting. Each member may vote for one candidate. The two candidates receiving the highest number of votes shall be declared the official candidates of the district. The minutes of such district meeting shall set forth, among other matters, the name of each person nominated at the meeting and the number of votes received by each, and shall specify the two official candidates of the district. A certified copy of the minutes, signed by the Secretary and the Chairman of the district meeting, shall be delivered to the Secretary-Treasurer of the Cooperative within five days after such district meeting.

b) **Election of Directors.** At all meetings at which directors are to be elected, the Secretary-Treasurer of the Cooperative shall place in nomination the names of the official candidates of each district from which a director is to be elected. Additional nominations for director may not be made from the floor. Election of directors shall be by printed, photocopied, or electronic ballot. The ballots shall list the candidates selected at the district meetings, the names to be arranged by districts and in the order of preference indicated by the respective district vote. Each member of the Cooperative shall be entitled to vote for one candidate from each district from which a director is to be elected. The candidate from each such district receiving the highest number of votes at the meeting shall be declared as the director to represent such district. Voting may include voting by mail or electronic ballot as set out in Article II, Section 8. In case of a tie vote for election of the nominees to the Board, at the Member Meeting, the designated Chairperson of the Member Meeting, for the Election of Directors, shall determine the tie by lot.

If for any election there is only one nominee for each of the three board positions so that each district nominee is running unopposed, ballots need not be provided by mail or electronically to the members and the election shall be made by the designated Chairperson of the Member Meeting, for the Election of Directors, entertaining a motion to elect the single candidates by a voice vote.

The members may at any meeting at which a director or directors shall be removed as hereinbefore provided elect a successor or successors thereto without compliance with the foregoing provisions with respect to nominations provided, however, that the director or directors so chosen must reside in the same district as the director or directors in respect of whom the vacancy occurs. Notwithstanding anything in this section contained, failure to comply with any of the provisions of this section shall not affect in any manner whatsoever the validity of any election of directors.

Capital Credit Allocation Notices



Kristi Jensen
Finance Manager

If you purchased energy from Lyon-Lincoln Electric Cooperative, Inc. in 2022, you will notice a special note on your February billing statement about capital credits. It simply says, "Capital Credit Allocation for 2022."

It will then list your 2021 ending balance and any retirements made in 2022 and the amount allocated in 2022 and then your 2022 ending balance. If you have more than one account, the amounts from all your accounts were combined and the total allocation appears on only your main membership account.

Former Lyon-Lincoln Electric Cooperative, Inc. members who purchased energy in 2022 and are now inactive were mailed a separate capital credit allocation statement.

The amount of capital credits allocated to you as a member of Lyon-Lincoln Electric Cooperative, Inc. represents your share of the cooperative's 2022 margins, or payments in excess of expenses. These margins were allocated to Lyon-Lincoln Electric members based on the total amount of electric energy billed in 2022. Margins may be used by the cooperative for operating capital, necessary reserves, and other contingencies.

The capital credit amount is an assignment of capital credits and not an indication of immediate payment. Capital credits will be paid to the members as determined by the Lyon-Lincoln Electric Board of Directors according to bylaw provisions. You can save this billing statement for your records. Please be sure to notify us of any address changes.

Page 1 of 2	
Statement Date	03/01/2023
Account Number	12345600
Payment Due	03/20/2023
Service Summary	
Previous Balance	200.00
Payment Received	Thank you 200.00 CR
Balance Forward	0.00 CR
Current Charges Due 03/20/22	150.00
Total Amount Due	150.00
After the 20th Pay	154.50
Current month's bill is subject to 3 percent late fee.	
Capital Credit Allocation for 2022	
Patronage for 2022 is \$2,178.60	
Capital Credit Balance Status:	
2021 Balance...: \$4,613.29	
2022 Retirement: \$132.69	
2022 Allocation: \$181.65	
2022 Balance...: \$4,662.25	
Above Allocations cannot be applied against any amount owed to the cooperative.	

YEAR-TO-DATE COMPARISON

	Nov.- 2021	Nov.- 2022
Total Revenue	\$9,471,357	\$9,883,320
Cost of Power	\$5,445,835	\$5,291,194
Operating Expenses	\$3,694,153	\$4,067,338
Operating Margins	\$331,370	\$524,788
KWH's Purchased	87,059,098	91,873,513
Services in Place	4,134	4,125
Miles of Line	1,671	1,670
Revenue per Mile	\$5,668	\$5,918



December Outage Report

(10 or more consumers)

12/13/22- 72 consumers were off 35 minutes in the Coon Creek and Island Lake Townships. The cause was a burnt up elbow.

12/13/22- 12 consumers were off 1 hour and 25 minutes in Diamond Lake Township. The cause was a tree limb on a line from ice and wind.

12/13/22- 34 consumers were off 50 minutes in Diamond Lake Township. The cause was a tree on the line from ice and wind.

12/13/22- 105 consumers were off 1 hour and 15 minutes in Hope and Marshfield Townships. The cause was a tree that went through a line from ice and wind.

12/15/22- 14 consumers were off 3 hours in Coon Creek Township. The cause was wrapped wires from ice and wind.

12/15/22- 17 consumers were off 2 hours in Shelburne Township. The cause was wrapped wires from ice and wind.

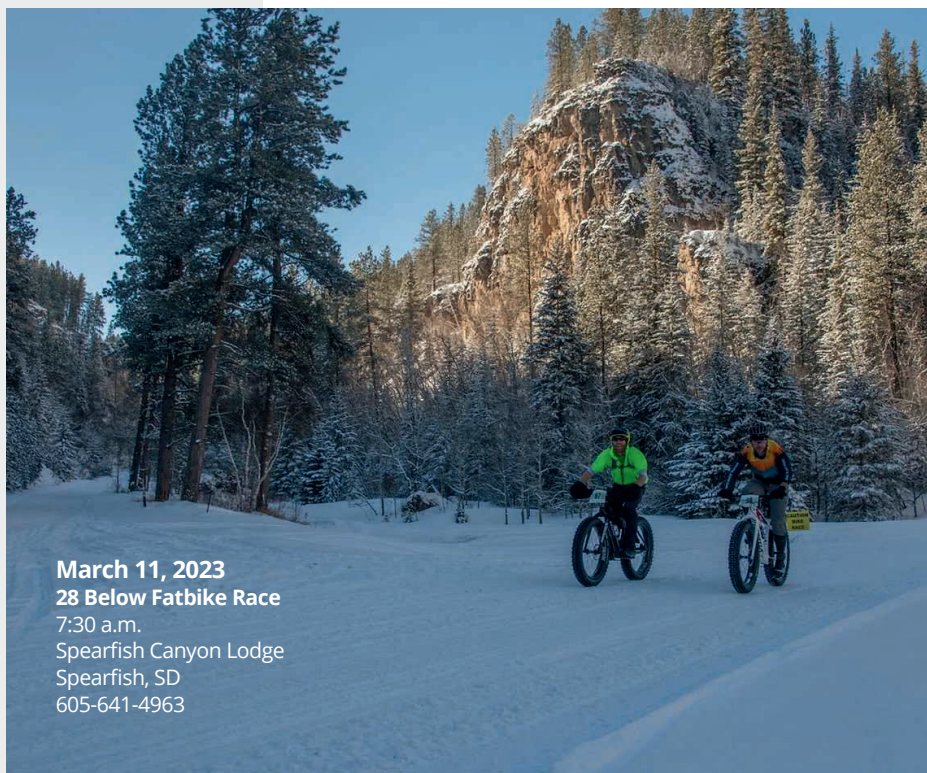
12/15/22- 469 consumers were off on the Marble Substation. The cause was ice on the Transmission lines.

12/15/22- 85 consumers were off 5 hour and 5 minutes in Diamond Lake and Drammen Townships. The cause was broken poles from ice and wind.

12/17/22- 20 consumers were off 2 hours in Shaokatan Township. The cause was a burn+down on the primary wire from ice and wind.

12/26/22- 14 consumers were off 1 hour and 15 minutes in Shelburne Township. The cause was a floater on the primary wire.

12/31/22- 38 consumers were off 2 hours and 20 minutes in Ash Lake, Diamond Lake and Drammen Townships. The cause was a burndown on the primary wire when the ice came off.



March 11, 2023
28 Below Fatbike Race
 7:30 a.m.
 Spearfish Canyon Lodge
 Spearfish, SD
 605-641-4963

To have your event listed on this page, send complete information, including date, event, place and contact to your local electric cooperative. Include your name, address and daytime telephone number. Information must be submitted at least eight weeks prior to your event. Please call ahead to confirm date, time and location of event.

MARCH 1-7
"In Flanders Fields" Art Exhibit & Silent Auction
 Vermillion Public Library
 Vermillion, SD
 605-658-6654

MARCH 4
Annual Ag Day
 9 a.m.-1 p.m.
 Washington Pavilion
 Sioux Falls, SD
 605-367-6000

MARCH 4
Hill City Arts Council: Live On Stage
 5:30 p.m.
 High Country Guest Ranch
 Hill City, SD
 605-574-2810

MARCH 11
28 Below Fatbike Race
 7:30 a.m.
 Spearfish Canyon Lodge
 Spearfish, SD

MARCH 18
Shamrock Shuffle Fun Run
 12 p.m.
 Main Street
 Presho, SD
 605-895-2559

MARCH 18
Shriners Kids Fun Day
 10 a.m.-4 p.m.
 Scherr-Howe Event Center
 Mobridge, SD
 605-845-2500

MARCH 18
Hill City Arts Council: Live On Stage
 5:30 p.m.
 High Country Guest Ranch
 Hill City, SD
 605-574-2810

MARCH 21
Knee High Naturalist: Birds
 Peter Norbeck Outdoor Education Center
 Custer, SD

MARCH 24-25
Schmeckfest
 Freeman Academy Campus
 Freeman, SD
 605-321-7351

MARCH 25-26
Greater Sioux Falls Model Train Show
 Multi-Cultural Center
 Sioux Falls, SD

MARCH 30
"The Wildest Banquet Auction in the Midwest"
 5:30 p.m.
 South Dakota Military Heritage Alliance
 Sioux Falls, SD
 605-339-1203

MARCH 31-APRIL 2
70th Annual Hayes Play: Trouble in Tumbleweed
 Hayes Community Hall
 Hayes, SD
 605-280-6556

APRIL 1
East Dakota Chapter NWTF 30th Banquet
 Sioux Falls, SD
 605-940-0702

APRIL 2-4
"The Psychic-a Murder Mystery of Sorts" Community Theater Performance
 Town Players Theater
 Watertown, SD
 605-882-2076

APRIL 21-22
Junkin' Market Days, Spring Market
 W.H. Lyon Fairgrounds Expo Building
 Sioux Falls, SD
 605-941-4958

Note: Please make sure to call ahead to verify the event is still being held.